



# MESA PRECAST

ARCHITECTURAL CONCRETE ELEMENTS



All building materials have characteristics that make them better for certain applications. The Mesa Precast materials are interchangeable but our salespersons can help you make a more informed choice for your particular situation. Almost all products shown in this catalog can be made in any of the styles shown.

### ARCHITECTURAL PRECAST

Architectural precast is a Portland cement based product made using a wet cast method. This product design can be cast in larger pieces eliminating or minimizing the joining of pieces. The finish is often etched to remove film and will have some surface distress. The distress is often a desirable look. The product is heavy and therefore can be a structural support. On the other hand because the product is heavy there may need to be other support if the product is used above the first level.

### GFRC – GLASS FIBER REINFORCED CONCRETE

GFRC is designed to have a surface appearance of architectural precast and cast stone, but weighing 50 to 75% less than the other two products. The strength of the product comes from specialty fibers imbedded in a much thinner concrete coating. The product is very versatile and has similar strength characteristics to architectural precast and cast stone. This product is often used when a building's structure is not sufficient to support architectural precast and cast stone or to save money on installation. The product itself is about 40 to 50% more than architectural precast and cast stone, but structural and installation savings offset the upcharge.

### CAST STONE

Cast Stone is also made from Portland cement using a dry cast method of production. Cast stone looks closer to limestone and other natural products than does architectural precast. Cast stone has limitations as to the dimensional size of pieces. Cast stone is generally more uniform in appearance and is less expensive than either architectural precast or GFRC.

### GFRG – GLASS FIBER REINFORCED GYPSUM

GFRG is an interior product used to simulate wood, stone and other carved surfaces. GFRG is the right product for interiors with molded ceilings, columns, domes, and detailed architectural elements. There is a substantial cost and installation savings in using this product. The hospitality industry often specifies GFRG as well as custom home builders.



## TABLE OF CONTENTS

Architectural Trim . . . . .	14-17
Balusters . . . . .	8-9
Columns . . . . .	4-7
Commercial . . . . .	36-37
Corbels . . . . .	24-25
Fireplace Designs . . . . .	20-23
Hardscape Elements . . . . .	28-29
Keystones . . . . .	30
Ornamental Elements . . . . .	26-27
Pavers . . . . .	34
Pier Caps . . . . .	10-11
Quoins . . . . .	35
Scuppers & Splash Blocks . . . . .	31
Signs . . . . .	38
Specialty Trim Panels . . . . .	18-19
Wainscot & Plinths . . . . .	32
Wall Coping . . . . .	12-13
Window Surrounds . . . . .	33

*Cut-sheets available upon request.*

## COLOR SELECTIONS



1 Antler Tan



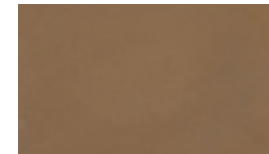
2 Buckskin



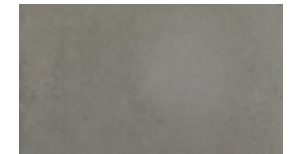
3 Chocolate



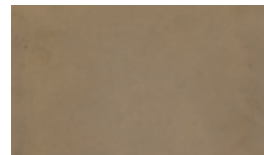
4 Cocoa Milk



5 Mocha Caramel



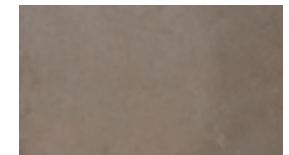
6 Gray



7 Natural Honey



8 Nuss Brown



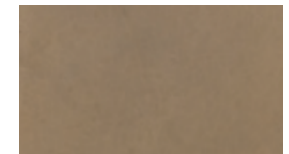
9 Ostrich



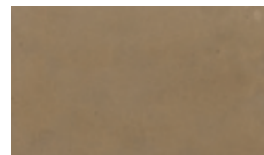
10 Portobello



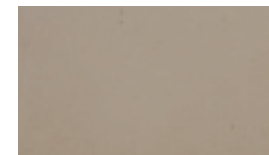
11 Sonoma Gold



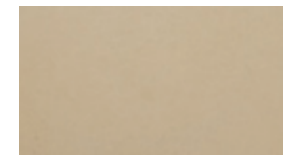
12 Tan



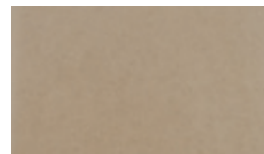
13 Western Wheat



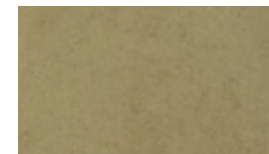
14 Latte



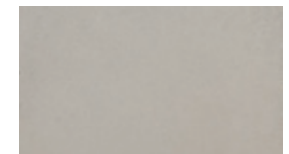
15 Moreno



16 Tusk



17 Buttercream



18 White

The color samples shown are approximate and represent as close as possible to the appearance of the precast provided by Mesa Precast. Standard products are produced in a Natural Gray color with a smooth finish. Colors and/or textures are available for additional costs.

Often the focal point of a building or home. Columns enhance the quality of a structure and come in many styles. Architects usually repeat the use of columns in pairs at several places on a structure to reinforce the architectural importance associated with this product.

### IMPORTANT POINTS

Columns come in almost any height and many diameters. They also can be produced as “splits or halves” against vertical surfaces.

Exterior columns are made in architectural precast and GFRC. GFRC has a more natural stone look and is 50% to 75% less in weight.

Interior columns are made from GFRC or GFRG depending on height and function.

Architectural columns are load bearing and do not need a structural post. GFRC columns require a structural post. The inside dimension or cavity shown shows the size of shaft than can be used with the column. GFRG will need a structural shaft if performing more than a decorative function.

Columns are available in a single shaft creating a smooth look or in a series of pieces or modular design. The modular design is used when an exact height is needed and not found in the single shaft product or where unit construction is part of the overall design.

### STYLE OF COLUMN

There are 3 components to a column: the capital, the shaft and the base.

**Classical Tuscan design** is by far the most widely used column due to its simple beauty and timeless appeal dating to the architecture of the Italian Renaissance.

**Corinthian design** has an ornate capital of a series of scrolls with projecting leaf designs in a repeating pattern. The early Greek temples show excellent examples of this design.

**Decorative capital columns** are uniquely designed to complement the room or house design of a project. Designs include Company Insignias, family crests, and floral motifs of this style of capital. The shafts of these columns are often in a rope design adding to their stylized look.

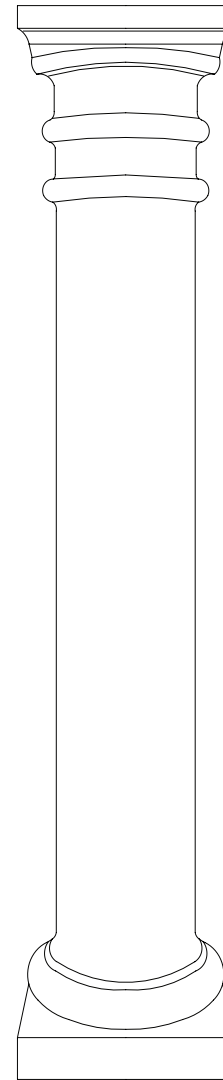
**Modular columns** have smooth shafts but can have almost any capital and base.

### COLUMN CAPITALS

Our selection of column capitals covers a wide range of ornamentation at the top of the column. Our designs include classic Tuscan with additional trim, Corinthian, and classic and modified Ionic and Doric features. In addition, we have other Ionic and Doric capitals with specialty patterns between each the four scrolls on the capital. The enhancements are generally floral or classic designs.

These specialty capitals are often used in a room setting where the column defines an important element of the room such as a fireplace, a cooking area, an entertainment center or similar use. These highly ornate pieces are also often used as bases for dining, coffee, and side tables. As split or half pieces they can be used as supporting pieces for a buffet or entrance piece. Artist often stain the pieces to enhance the look.





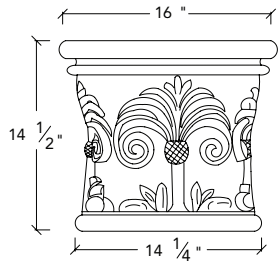
### CONCRETE COLUMNS

Height	Base Sizes	Shaft Sizes
3-7'	18" · 24"	12" · 16"
3-8'	14"	8"
4-7'	24"	16"
4-11'	18"	12"
5-11'	18" · 24"	12" · 16"
6-11'	18" · 24"	12" · 16"
7-11'	12" · 18" · 24"	8" · 12" · 16"
8-11'	18" · 24"	12" · 16"
9-11'	18" · 24"	12" · 16"
4' 6"	14"	8"
11' 4"	24"	16"
13' 1"	24"	16"

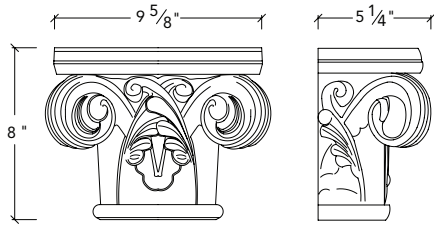
### GLASS FIBER REINFORCED CONCRETE COLUMNS

Height	Base Sizes	Shaft Sizes
3-7'	18" · 24"	12" · 16"
3-8'	14"	8"
4-7'	24"	16"
4-11'	18"	12"
5-11'	18" · 24"	12" · 16"
6-11'	18" · 24"	12" · 16"
7-11'	12" · 18" · 24"	8" · 12" · 16"
8-11'	18" · 24"	12" · 16"
9-11'	18" · 24"	12" · 16"
4' 6"	14"	8"
11' 4"	24"	16"
13' 1"	24"	16"

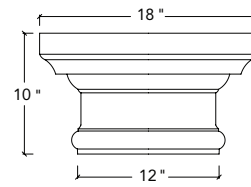




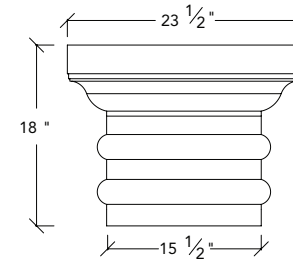
MC-C-RP



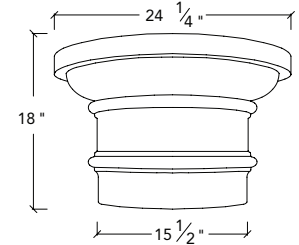
Pylos  
C-C-P



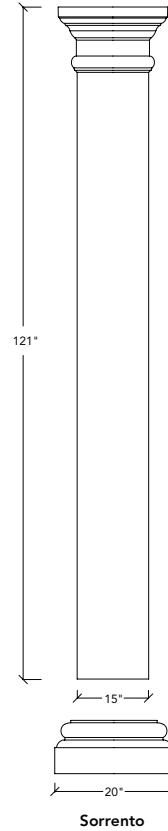
MC-C-1S



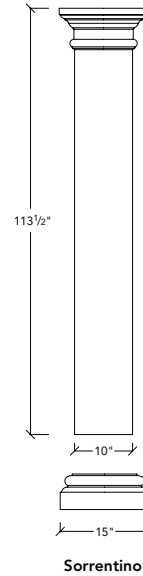
MC-C-2S



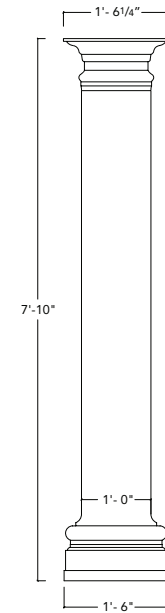
MC-C-2SR



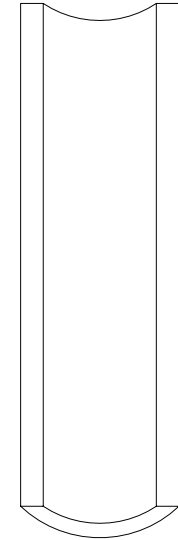
Sorrento



Sorrentino

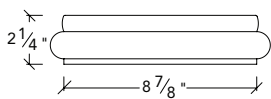


Split GFRG Column

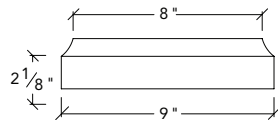


The Sorrento and Sorrentino columns are more versatile since they can be manufactured to the exact length needed up to the overall measurements shown. These columns are available in GFRG or GFRC only.

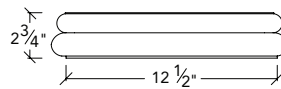
MODULAR COLUMN SHAFT		
Model No.	Height	Width
C-S-14-120	120"	14"
C-S-14-60	60"	14"
C-S-10	42"	10"
MC-S-25	24"	10"
MC-S-25	24"	12"



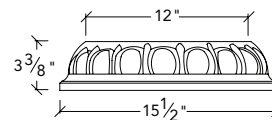
C-1 Collar



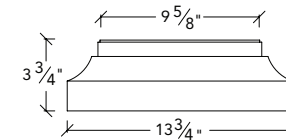
C-2 Collar



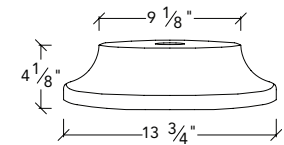
C-3 Collar



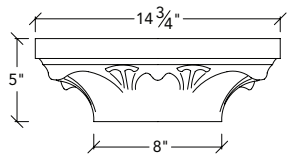
C-4 Collar



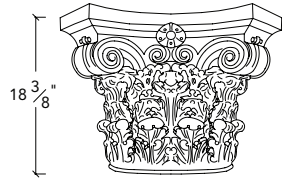
SC-B Base



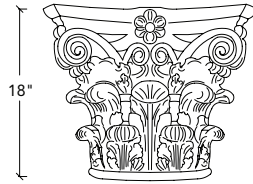
RC-B Base



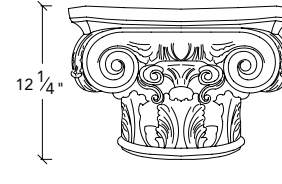
SD-C



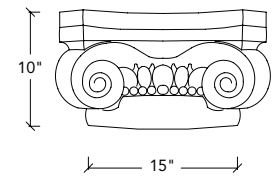
C-C-20



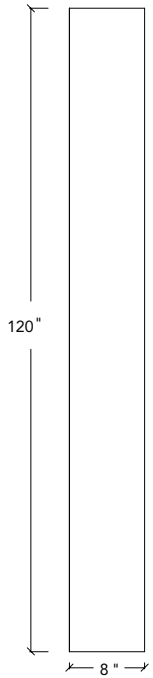
C-C-19



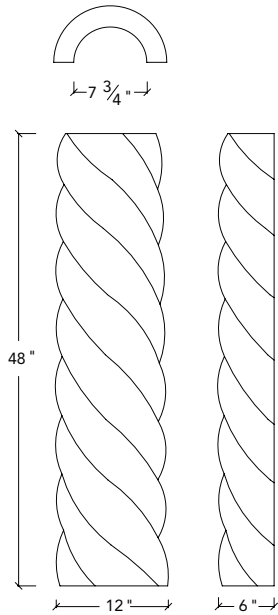
C-C-12



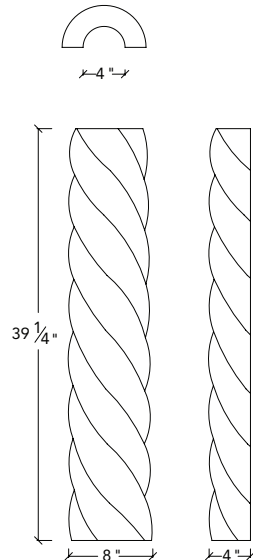
C-C-10



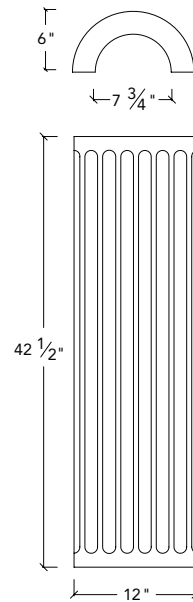
SMC-8S



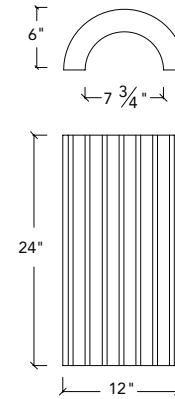
SPC-48-12



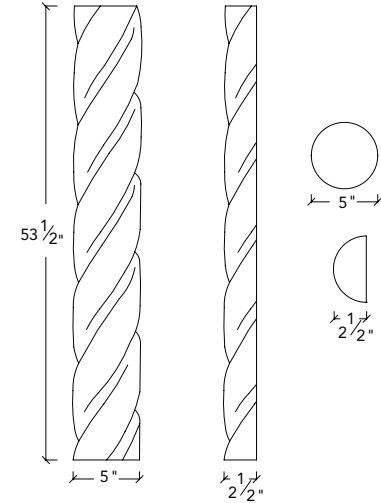
SPC-39-8



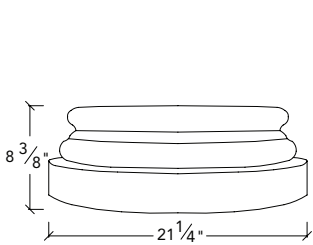
FS-12DT



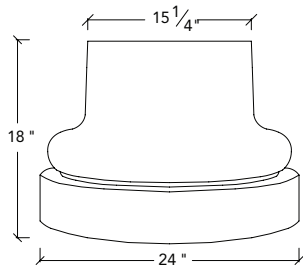
FS-12S



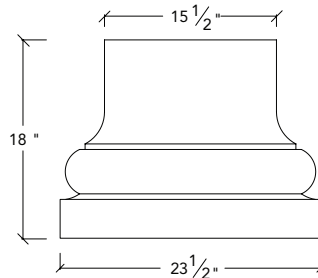
SPC-53-5



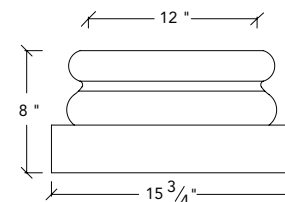
C-B-8 Base



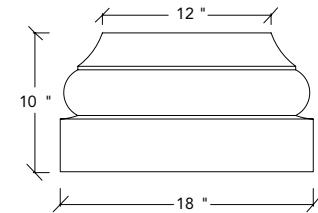
MC-B-2SR



MC-B-2S



MC-B-SR



MC-B-1S

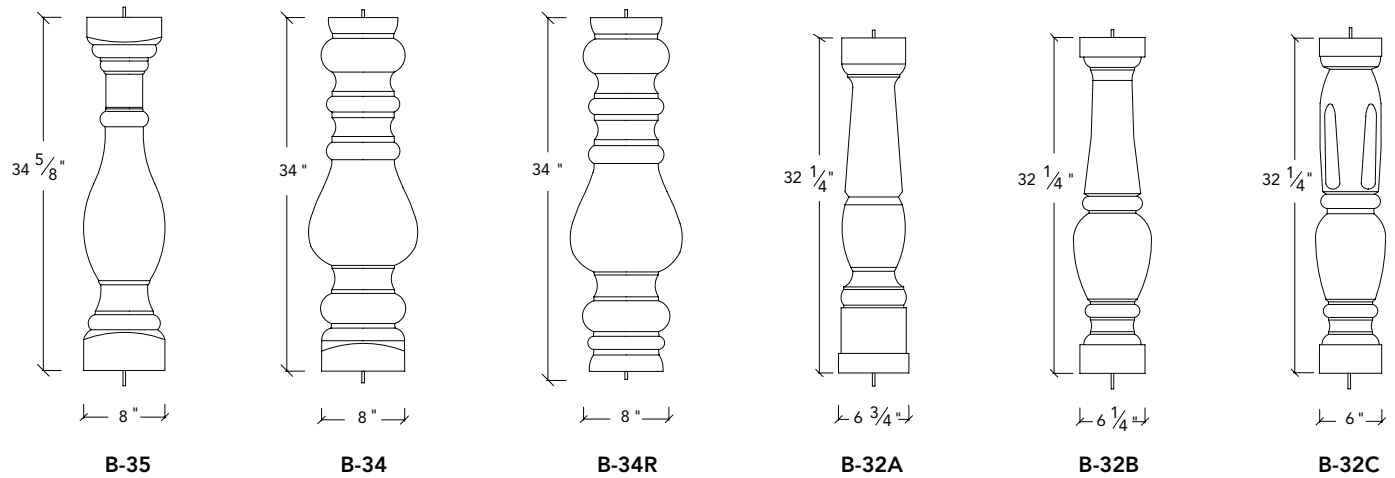
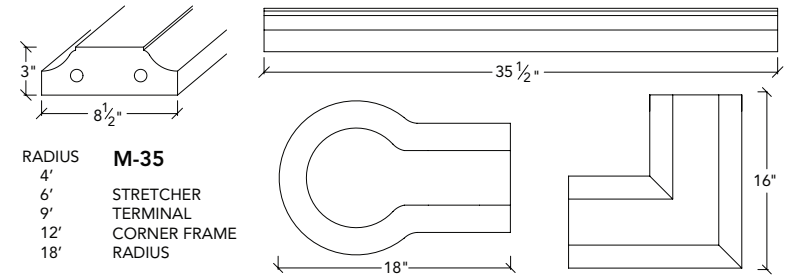
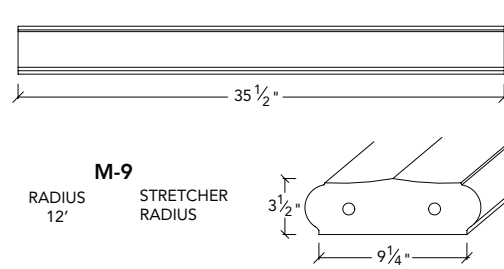
**B**alusters are a highly decorative railing system. Balusters are used functionally as railings and are excellent choices for balcony and porch enclosures and ornamental coping for terraces and similar landscape enhancement.

Balusters are a railing system consisting of posts in a wide range of styles as shown on this page, with a top railing and bottom base joining the posts together. A larger base item, known as a newel post, serves as a corner piece or an additional support for long stretches of the baluster system.

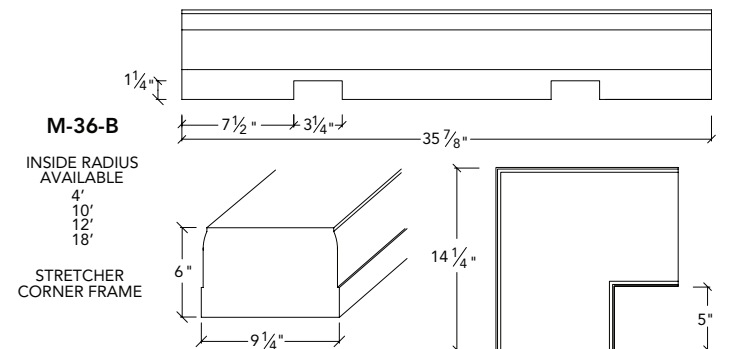
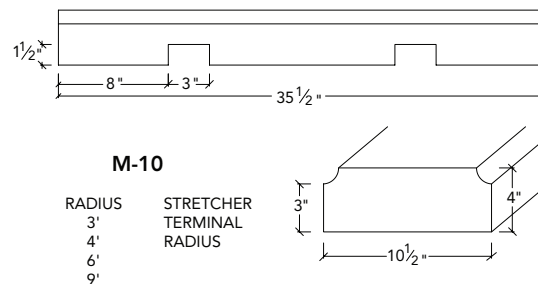
Mesa Precast salespersons can provide design support for balusters using the various styles shown of this functional or highly decorative system.



## HANDRAILS

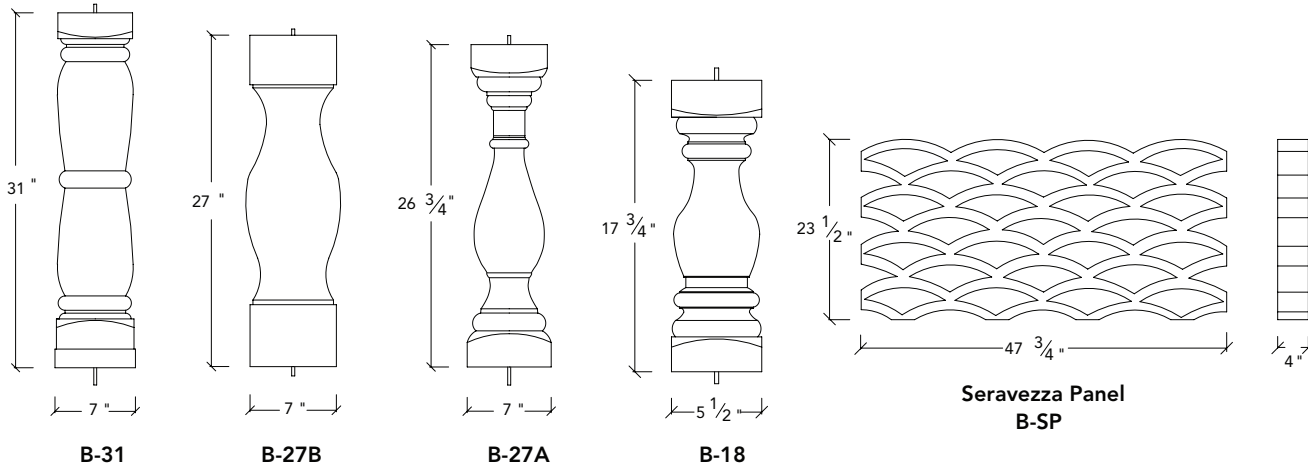


## BASES

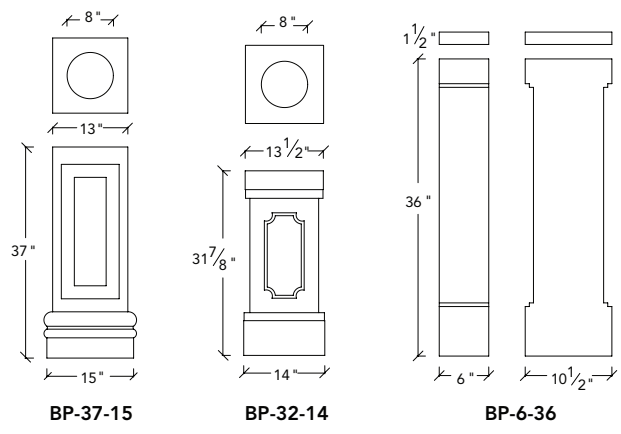


*These designs come with or without the weep holes.*

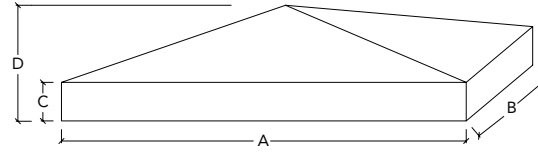




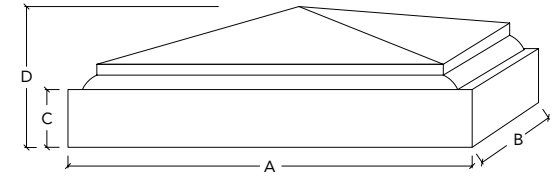
NEWEL POSTS



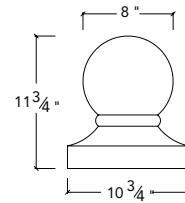
**P**ier Caps are used to finish masonry columns or pillars. Good uses include pier caps at breaks in a wall or at an entrance, as support columns that reinforce a wall or fence, or columns that do not have an ornate capital. There are many choices including caps with a rise that creates a pyramid shape, a flat cap so that a planter, sphere, finial or light can be added to the cap. Sphere balls are a great shape to finish a pier cap as shown on this page.



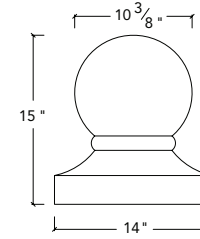
Model No.	A	B	C	D
PYC-25-17	17"	25"	4"	6"
PYC-18	18"	18"	2 1/2"	7 1/2"
PYC-20	20"	20"	3"	5"
PYC-21	21"	21"	2"	4"
PYC-24	24"	24"	1 5/8"	5"
PYC-24A	24"	24"	3"	9"
PYC-25	25"	25"	4"	6"
PYC-28	28"	28"	4"	7 1/2"
PYC-28A	28"	28"	2"	8"
PYC-30	30"	30"	4"	9"
PYC-32	32"	32"	2"	13 5/8"
PYC-32A	32"	32"	4"	12 1/2"
PYC-32B	32"	32"	3"	9"
PYC-36	36"	36"	3"	12"



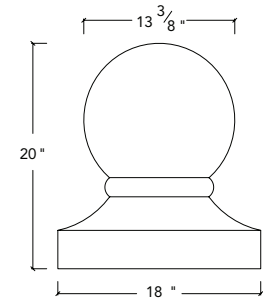
Model No.	A	B	C	D
JPYC-18	18"	18"	2"	4 1/4"
JPYC-24	24"	24"	4"	9 1/2"
JPYC-28	28"	28"	4"	8 3/4"
JPYC-32	32"	32"	3 3/4"	8"
JPYC-36	36"	36"	4"	9 3/4"
JPYC-40	40"	40"	4"	10 1/2"
JPYC-48	48"	48"	4"	10"



SB-8

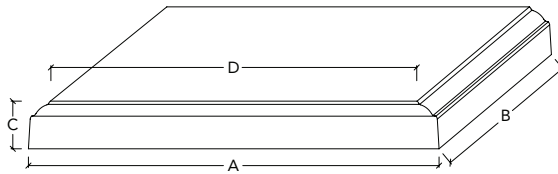


SB-11



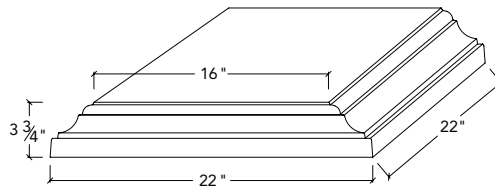
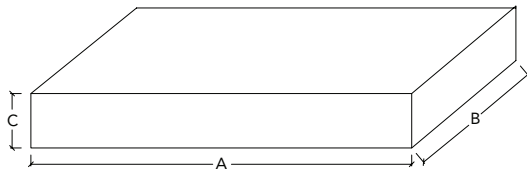
SB-14





Model No.	A	B	C	D
PC-15	14 $\frac{3}{4}$ "	14 $\frac{3}{4}$ "	2 $\frac{1}{2}$ "	12"
PC-18	18"	18"	2 $\frac{1}{2}$ "	15"
PC-24	24 $\frac{1}{4}$ "	24 $\frac{1}{4}$ "	2 $\frac{5}{8}$ "	21"

Model No.	A	B	C	D
PC-27	27"	27"	2 $\frac{1}{8}$ "	23 $\frac{3}{4}$ "
PC-28	28"	28"	3 $\frac{1}{8}$ "	25"
PC-32	32"	32"	3 $\frac{1}{8}$ "	29"
PC-36	36"	36"	3 $\frac{1}{4}$ "	33"

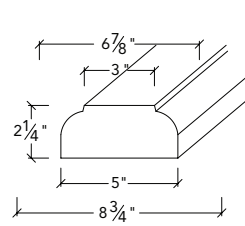


PC-22

Model No.	A	B	C
FC-20-4	20"	20"	4"
FC-24-4	24"	24"	4"
FC-28-4	28"	28"	4"
FC-32-4	32"	32"	4"
FC-36-4	36"	36"	4"
FC-44-4	44"	44"	4"

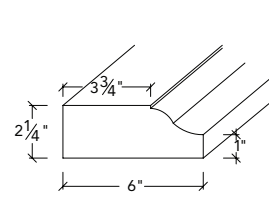


**W**all Coping is used to complete or finish the top of any masonry wall, fence or structure. Think of these pieces as the roof of the masonry wall that sheds water and ice and keeps the wall protected. Wall coping accentuates rock, brick, stucco and other natural and man-made masonry products. The beauty of wall coping is that it can be cast to follow the wall beneath exactly, whether it is curving, angled, or straight. The pieces shown come in many lengths and styles. A stretcher piece means that this piece can form a row when placed with other like pieces providing a consistent and uniform look. These pieces are also referred to as a wall cap.



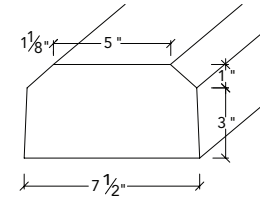
**M36-2-5**  
**M36-2-8**

LENGTH 35 5/8" STRETCHER



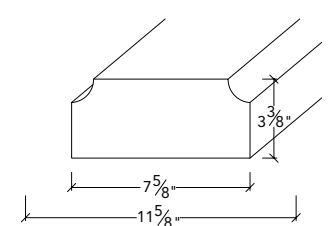
**M-14-2**

LENGTH 35 1/2" STRETCHER



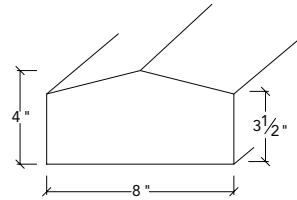
**MWC-8-4**

LENGTH 48" STRETCHER



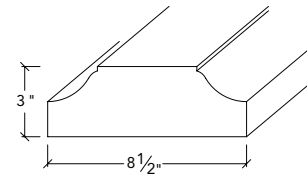
**M-20-8**  
**M-20-12**

LENGTH 24" STRETCHER  
TERMINAL



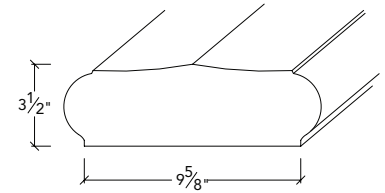
**M-48-8**

LENGTH 47 1/2" STRETCHER  
CORNER FRAME



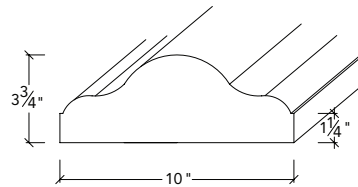
**M-35**

RADIUS 4'  
6'  
9'  
12'  
18'  
LENGTH 35" STRETCHER  
TERMINAL  
CORNER FRAME  
RADIUS



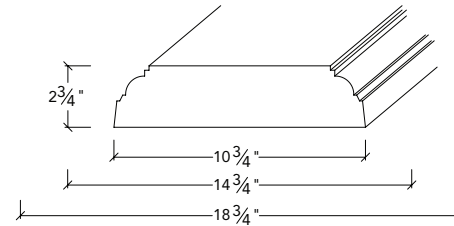
**M-9**

RADIUS 12" LENGTH 35 1/2" STRETCHER  
RADIUS



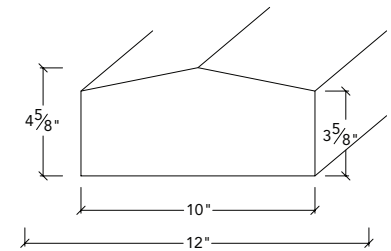
**M-32-9**

LENGTH 31 3/4" STRETCHER



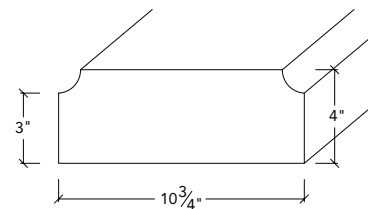
**M-36**

RADIUS 12" LENGTH 35 3/4" STRETCHER  
TERMINAL  
\* 10 3/4" & 14 3/4" CORNER FRAME\*  
\*\* 10 3/4" RADIUS\*



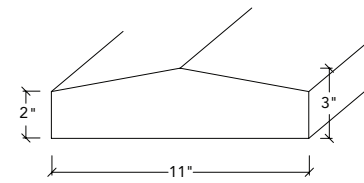
**M-10-3**  
**M-12-3**

LENGTH 36" STRETCHER



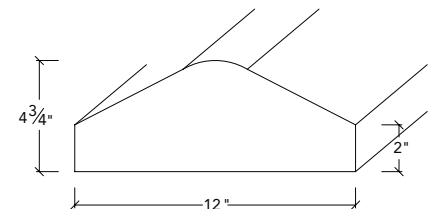
**M-10**

RADIUS 36" LENGTH 35 1/2" STRETCHER  
TERMINAL  
RADIUS



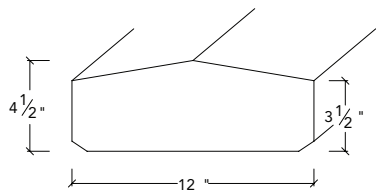
**M-11-36**

LENGTH 36" STRETCHER



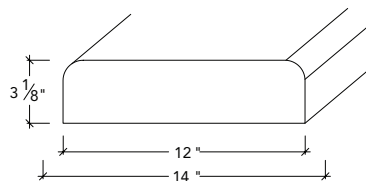
**M-12**

LENGTH 31 1/2" STRETCHER  
TERMINAL



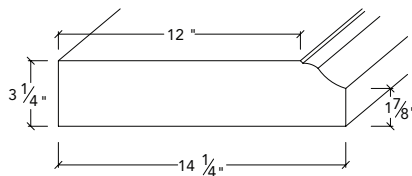
**M-12-2**

LENGTH 36" STRETCHER



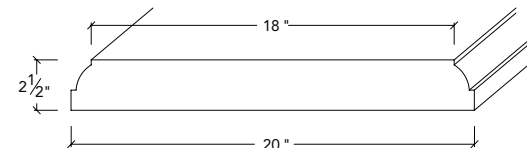
**M-124-32  
M-144-32**

LENGTH 32" STRETCHER



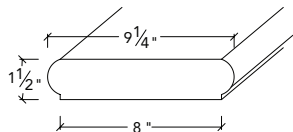
**M-14-3**

LENGTH 36" STRETCHER



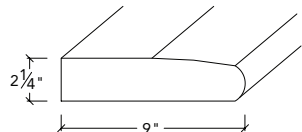
**WC-20**

LENGTH 32" STRETCHER  
LENGTH 23 1/4" TERMINAL



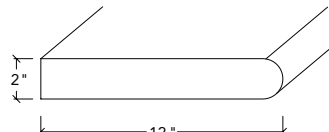
**M-WDB-8**

LENGTH 31 3/4" STRETCHER



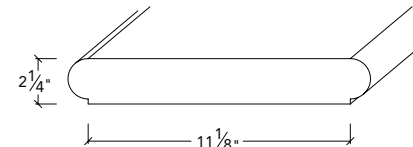
**M-WSB-9**

LENGTH 15 3/4" STRETCHER



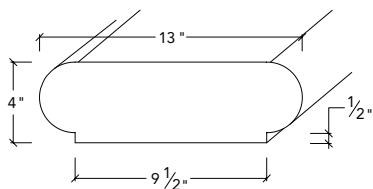
**M-WSB-12**

LENGTH 32" STRETCHER



**M-WDB-13**

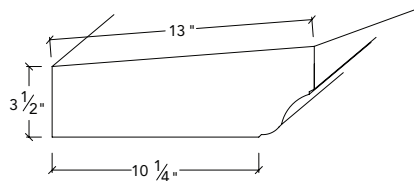
LENGTH 36" STRETCHER  
LENGTH 13" TERMINAL



**M-WDB-13-4**

RADIUS  
34"  
54"  
13'4"  
36"  
41"

LENGTH 32" STRETCHER  
TERMINAL



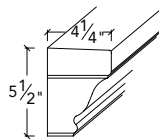
**M-11-4**

LENGTH 36" STRETCHER  
INSIDE CORNER  
OUTSIDE CORNER

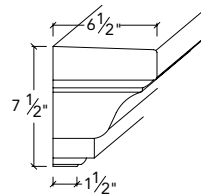




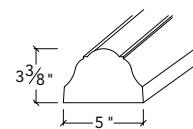
Architectural Trim is the most versatile material shown in our product line. Uses include material for entrance ways, door surrounds, banding and water tables. These pieces are also used with many other specialty pieces to make fireplaces, ceiling accents, and wall applications.



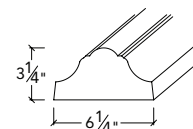
**M-5-4**  
 LENGTH 23 3/4" STRETCHER  
 LENGTH 28 3/4" LEFT RETURN  
 RIGHT RETURN



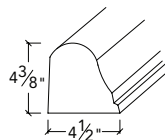
**M-8-4**  
 LENGTH 31 1/2" STRETCHER  
 LENGTH 28 5/8" LEFT RETURN  
 RIGHT RETURN



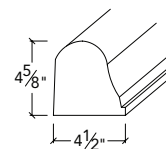
**M-32-5**  
 LENGTH 31 3/4" STRETCHER



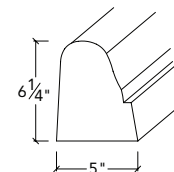
**M-32-6**  
 LENGTH 31 3/4" STRETCHER  
 INSIDE CORNER  
 OUTSIDE CORNER



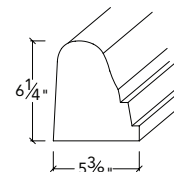
**M-AS-4-36**  
 LENGTH 36" STRETCHER



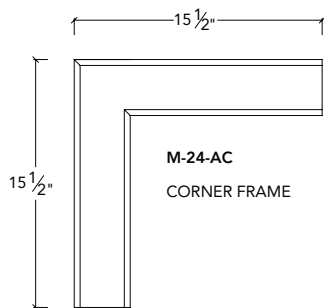
**M-AS-4-36L**  
 LENGTH 36" STRETCHER



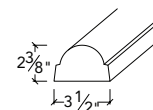
**M-AS-6-36**  
 LENGTH 36" STRETCHER



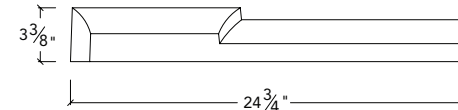
**M-AS-6-36L**  
 LENGTH 36" STRETCHER



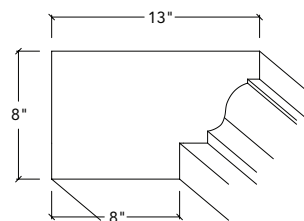
**M-24-AC**  
 CORNER FRAME



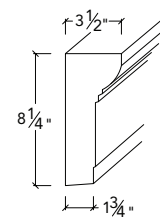
**M-24-AS**  
 LENGTH 23 5/8" STRETCHER  
 CORNER FRAME  
 OUTSIDE CORNER



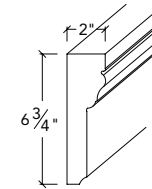
**M-24-AR-T**  
 TERMINAL  
 CORNER FRAME



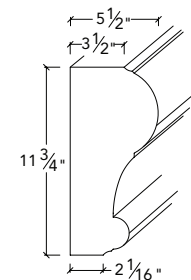
**M-18**  
 LENGTH 16" STRETCHER  
 LENGTH 13 1/2" LEFT RETURN  
 RIGHT RETURN



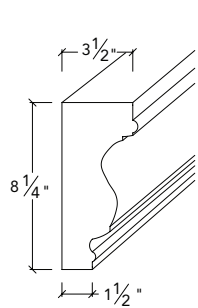
**M-8**  
 RADIUS  
 LENGTH 24" STRETCHER  
 LENGTH 27 7/8" DOUBLE RETURN  
 RADIUS  
 TURRET RADIUS  
 49"



**M-7**  
 LENGTH 24" STRETCHER  
 CORNER FRAME

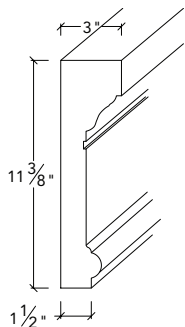


**M-7-3**  
 LENGTH 24" STRETCHER



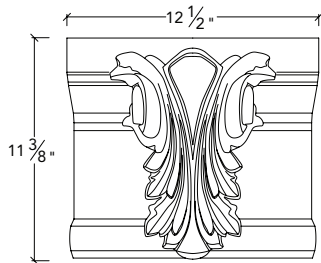
**M8-2**

LENGTH 23 1/4" STRETCHER  
 LENGTH 25 3/8" LEFT RETURN  
 RIGHT RETURN

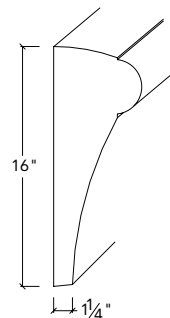


**M-32-12**

RADIUS 24"  
 33 1/2"  
 36"  
 62"  
 64"  
 72"  
 LENGTH 31 5/8" STRETCHER  
 OUTSIDE CORNER  
 DOUBLE RETURN

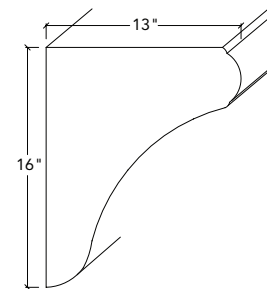


**M-32-12-LEAF**



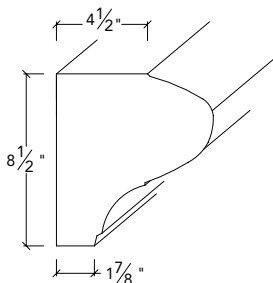
**MC-2**

LENGTH 23 3/4" STRETCHER  
**MC-1**  
 LENGTH 16" LEFT RETURN  
 RIGHT RETURN



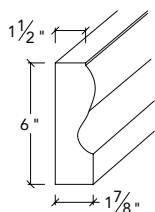
**MC-3**

LENGTH 32" STRETCHER



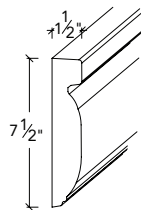
**M-32-4**

LENGTH 23 3/4" STRETCHER  
 OUSIDE CORNER



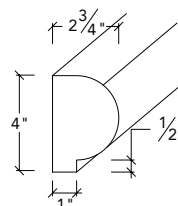
**M-17**

LENGTH 27 1/2" STRETCHER



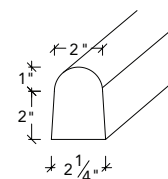
**M-31**

LENGTH 23 1/2" STRETCHER



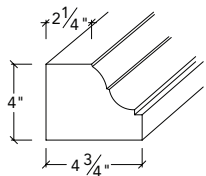
**M-WSB-2**

LENGTH 31 5/8" STRETCHER



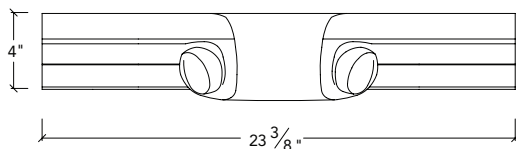
**M-WSB-3**

LENGTH 31 1/2" STRETCHER



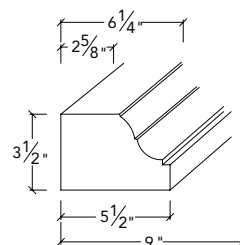
**M-24-2**

LENGTH 23 1/2" STRETCHER  
 DOUBLE RETURN



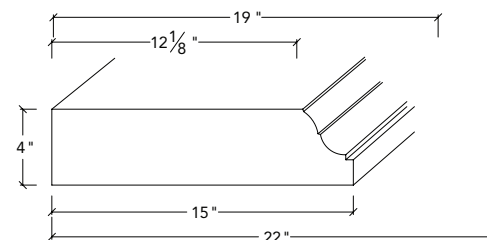
**M-24-2-RAM**

LENGTH 23 3/4" STRETCHER



**M-24-3**

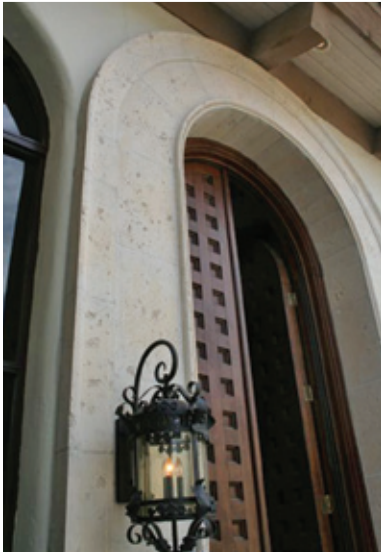
LENGTH 23 3/4" STRETCHER  
**MC-24-6**  
 LENGTH 15" STRETCHER  
 LEFT RETURN  
 RIGHT RETURN



**M-24-15**  
**M-24-22**

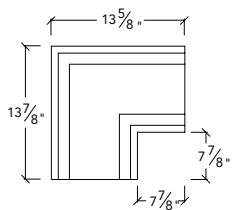
LENGTH 23 1/2" STRETCHER  
 LEFT RETURN  
 RIGHT RETURN

ARCHITECTURAL TRIM





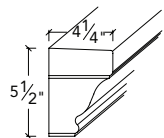
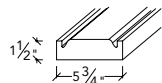
**M1-5**



LENGTH 23 1/2"

RADIUS  
12"  
18"  
24"  
48"  
50"  
15'6"

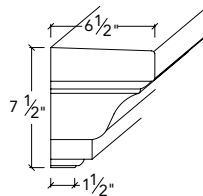
STRETCHER  
TERMINAL  
CORNER FRAME  
RADIUS



**M-5-4**

LENGTH 23 3/4" STRETCHER

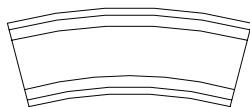
LENGTH 28 3/4" LEFT RETURN  
RIGHT RETURN



**M-8-4**

LENGTH 31 1/2" STRETCHER

LENGTH 28 5/8" LEFT RETURN  
RIGHT RETURN

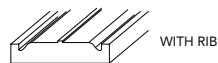


WITHOUT RIB  
RADIUS

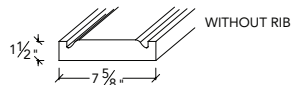
12"  
16"  
18"  
20"  
24"  
28"  
32"  
36"  
44"  
50"  
62"  
72"  
15'6"

**M1-8**

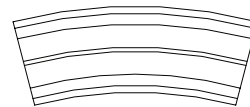
STRETCHER  
TERMINAL  
CORNER FRAME  
TEE  
RADIUS



WITH RIB

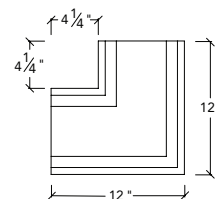
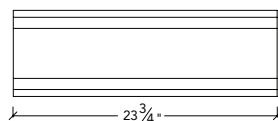
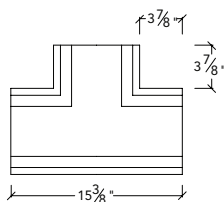


WITHOUT RIB



WITH RIB  
RADIUS

12"  
16"  
18"  
20"  
22"  
24"  
25"  
28"  
30"  
32"  
36"  
44"  
50"  
54"  
62"  
72"  
96"  
15'6"

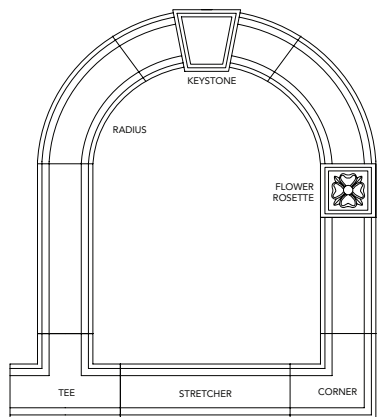
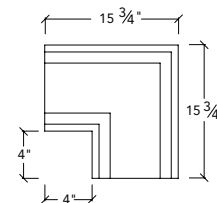
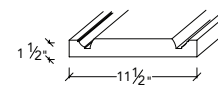


**M1-12**

LENGTH 23 1/2"

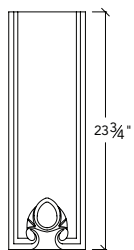
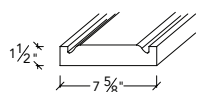
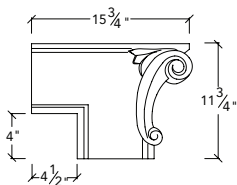
RADIUS  
12"  
24"  
36"  
48"  
52"  
62"  
96"

STRETCHER  
TERMINAL  
CORNER FRAME  
RADIUS



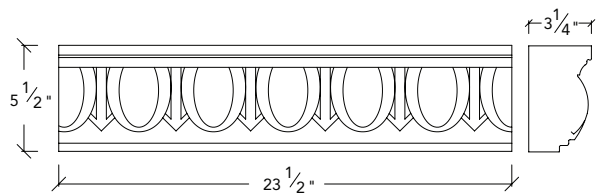
**M1-8-DECO**

STRETCHER  
TERMINAL  
CORNER FRAME

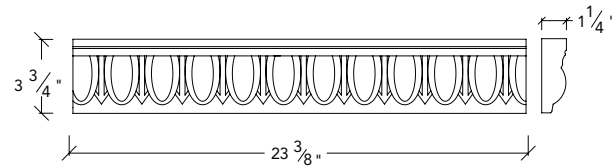


**S**pecialty Trim Panels and Bases are beautiful and can be added individually or as a grouping to almost any area of a house or building. Interior rooms can be enhanced with these products at a cost that is less than wood. These items make interesting wall base and crown ceiling complements. They can also be used to decorate a front porch, a garden room and change a patio to a terrace. Decorative Moldings are often used as a frieze above a door, or a panel on a wall for ornamentation. There is virtually no maintenance with this highly decorative item.

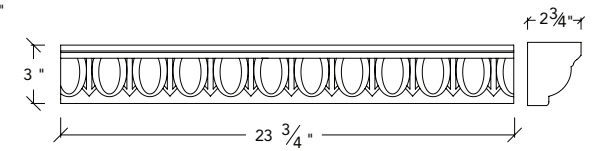
These products lend themselves to be being produced in GFRC for the outside and GFRG for the inside of a home or other building. Both products allow for easy installation and require no added structural support.



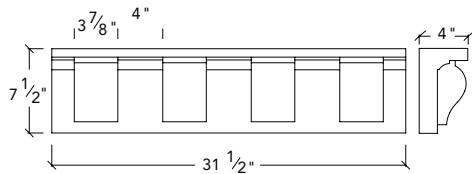
**Large Egg & Dart**



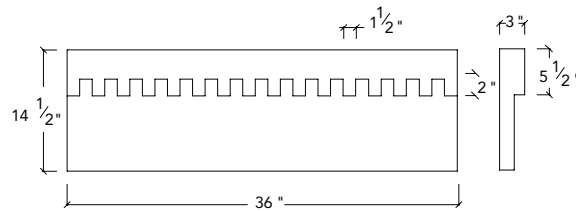
**Medium Egg & Dart**



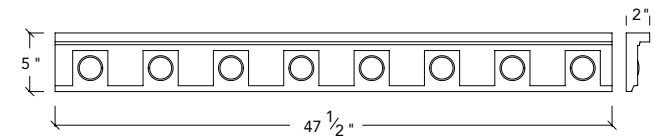
**Small Egg & Dart**



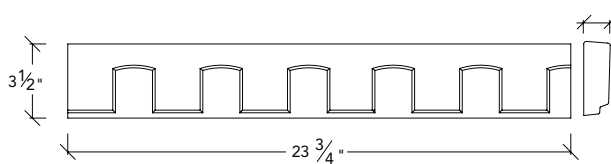
**#1 Dentil Frieze**



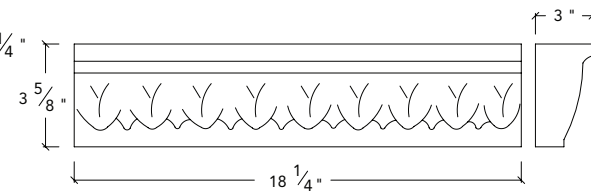
**#2 Dentil Frieze**



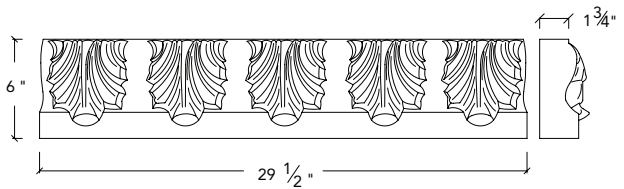
**#3 Dentil Frieze**



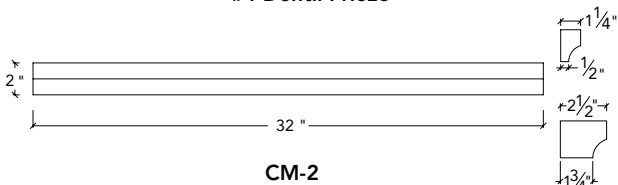
**#4 Dentil Frieze**



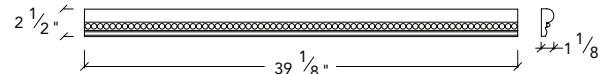
**Acanthus Leaf**



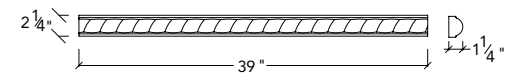
**Venetti Leaf**



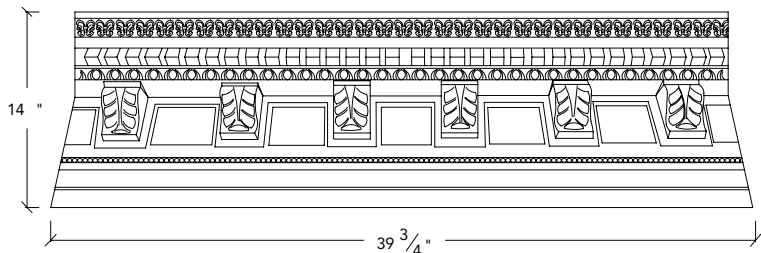
**CM-2**



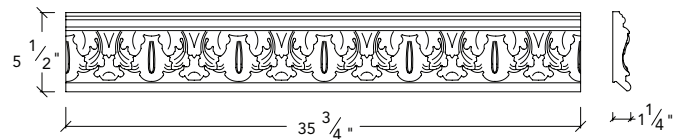
**Bead**



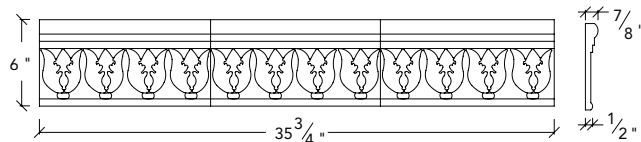
**Twist**



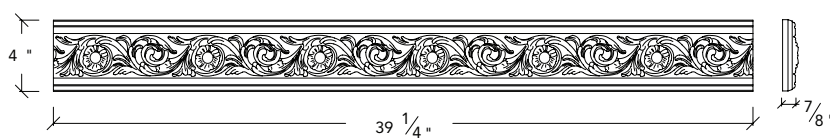
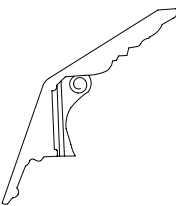
#5 Dentil Frieze



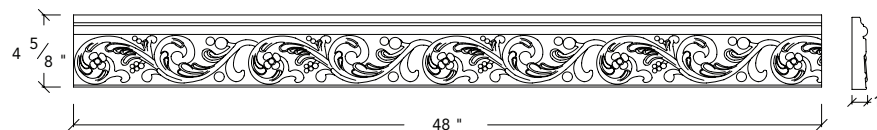
CM-8



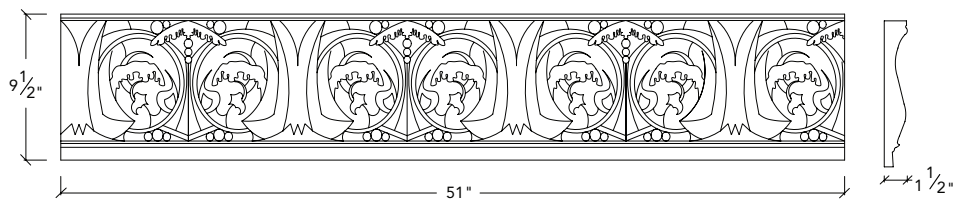
Tulip



Floral



Vine



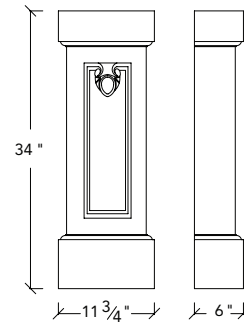
CM-7

STRETCHER CORNER

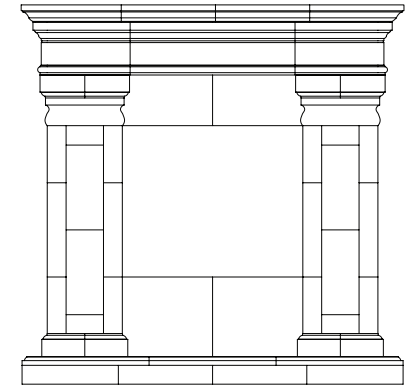


**F**ireplace Designs of architectural precast and GFRC are the preferred look in both new construction and remodeling. Our product line shows many styles, provides a custom look, and is maintenance-free and fire retardant.

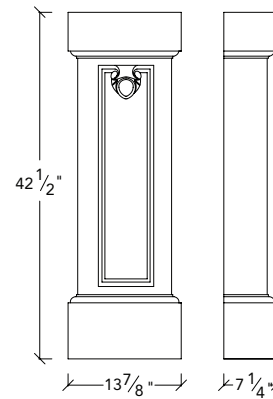
Product experience is critical in choosing the right fireplace and Mesa Precast has the support needed to make the best choice.



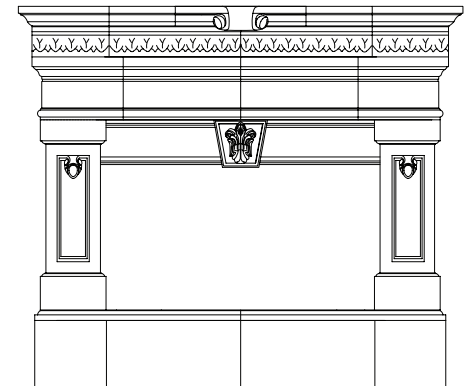
Small Deco Egg Leg



Stafford

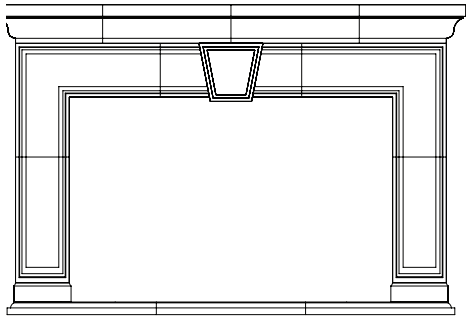


Large Deco Egg Leg

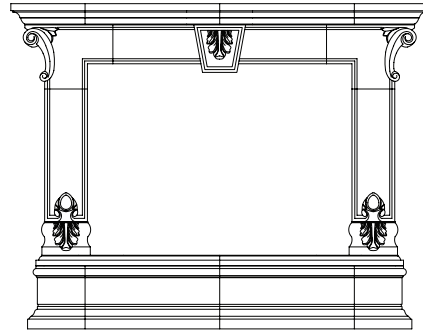


Rimini

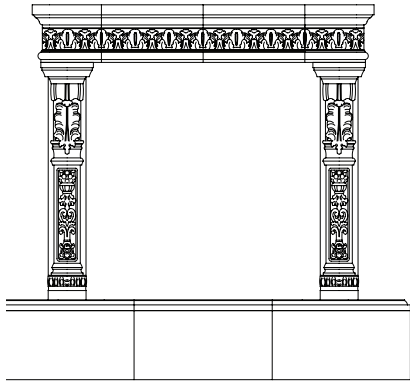




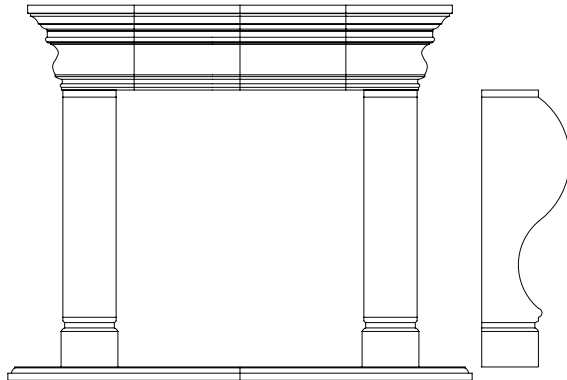
Norwich



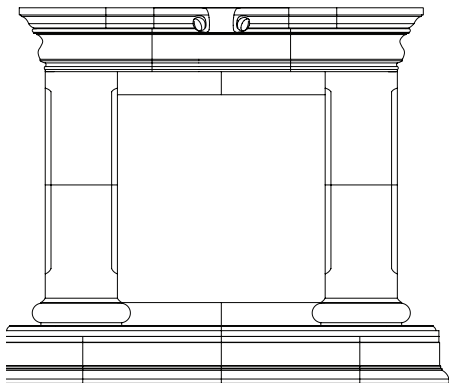
Vicenza



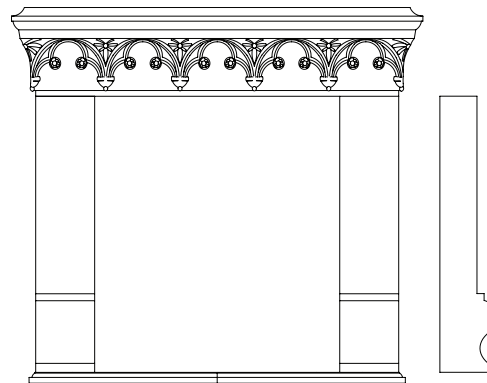
Florence



Dublin

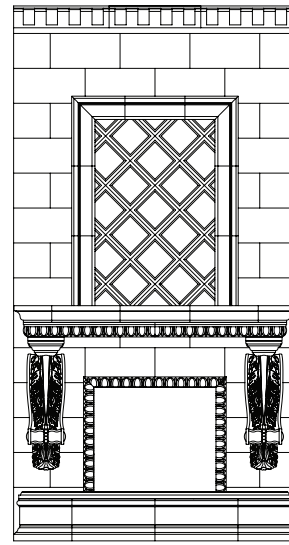


Oxford

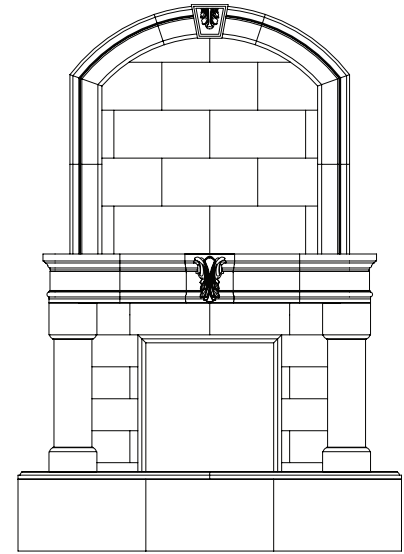


Newcastle



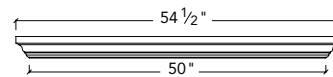


Rochester

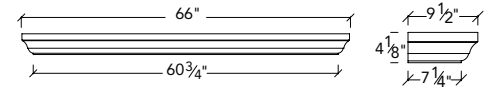


Verona

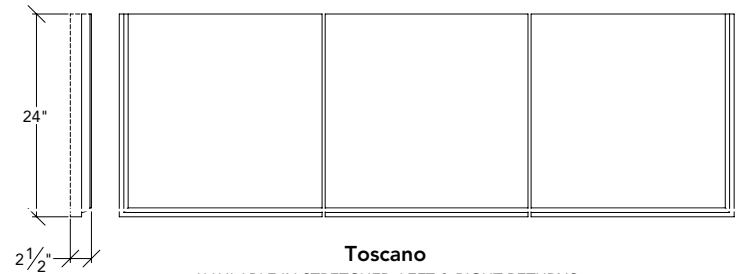
ONE-PIECE MANTELS



Mantel #1

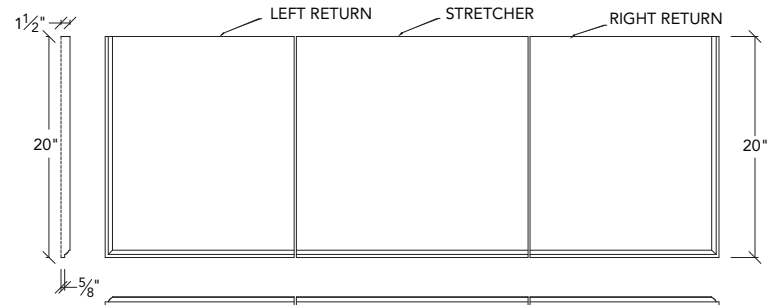


Mantel #2



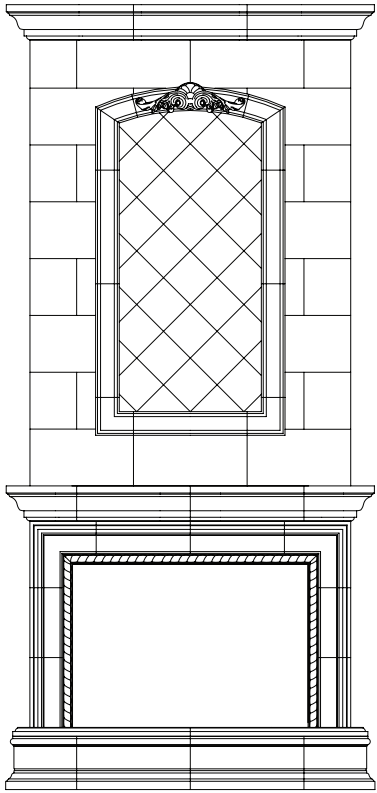
Toscano

AVAILABLE IN STRETCHER, LEFT & RIGHT RETURNS

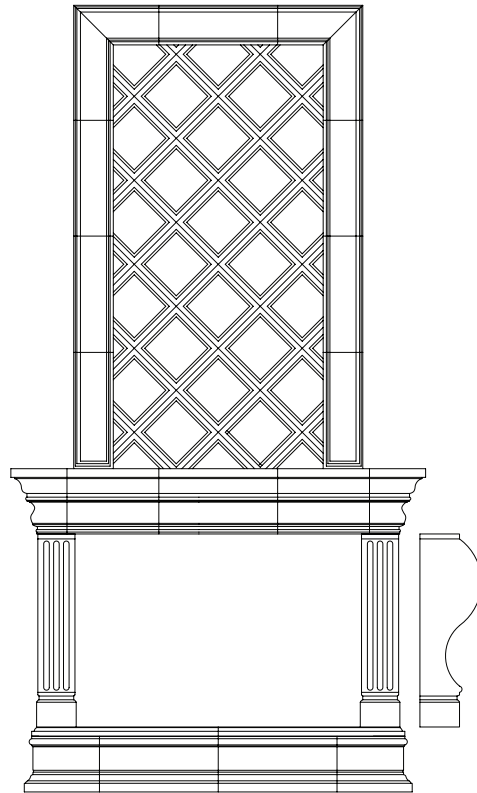


McDade

(LEFT/RIGHT RETURN AND STRETCHER)



Cambria



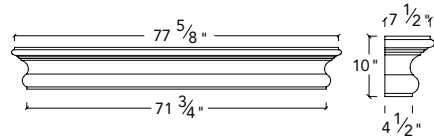
Windsor



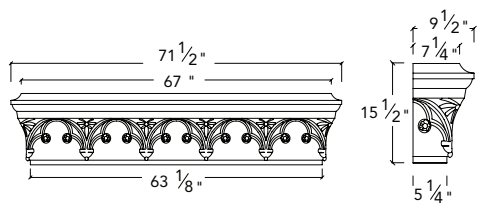
ONE-PIECE MANTELS



Mantel #3



Mantel #4



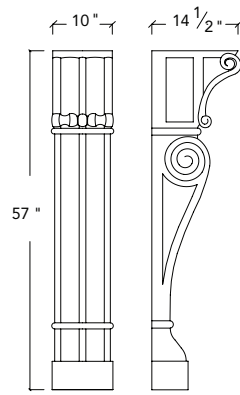
Newcastle Mantel



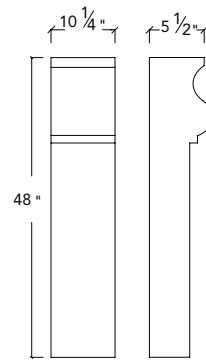
Corbels are wall brackets that are highly decorative or can be used to support almost any heavy object such as shelf, a sculpture, a vase or almost any other object. The beauty and sophistication that these supportive structures add to any room reflects a wide design range from classical to modern.

Corbels are the perfect ornament for kitchens and can be used to support counter tops, work islands and decorative vent hoods. These items turn an ordinary kitchen into a custom design with the feeling of a hand-crafted accent. Corbels are great accent pieces in bathrooms to support a counter, to make a towel bar, and frame a bath. In the shower they are often used to enhance and enlarge the soap and shampoo area. Corbels can add sophistication to the entryway when used in place of a keystone or as plinth blocks at the base of a primary doorway.

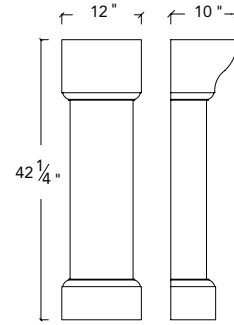
The use of Corbels on the outside of a home are almost limitless. They are excellent decorative pieces above a window or door with the use of other Mesa Precast trim pieces or as a single accent. They also add interest to square posts whether they are masonry or wood. Outside lights that look only utilitarian can become designer pieces with a corbel of almost any style beneath the fixture. Corbels also work enhancing the beauty and use of outdoor porches, particularly for shelving or serving area.



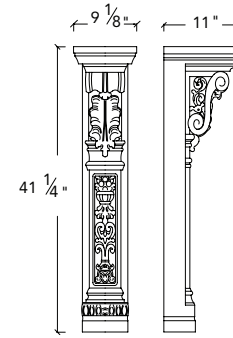
**Barcelona**



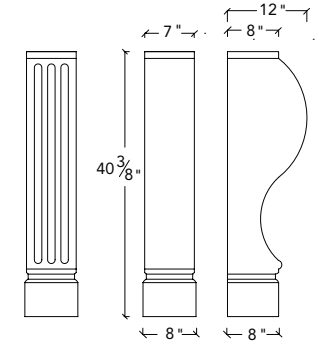
**Hampton**



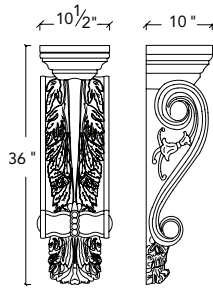
**Newport**



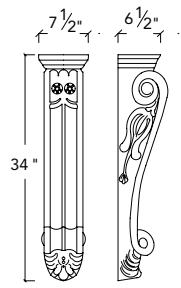
**Da Vinci**



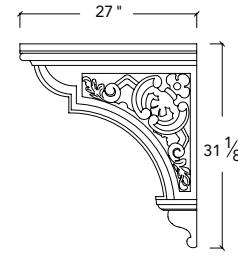
**Manchester (without Flutes)  
Canterbury (with Flutes)**



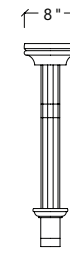
**Graziella**



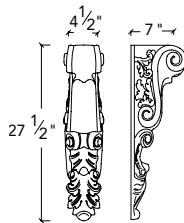
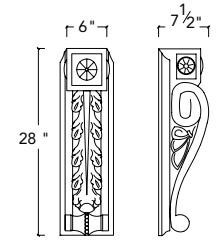
**Stavola**



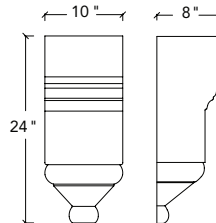
**Benedetto Bracket**  
Available in left & right



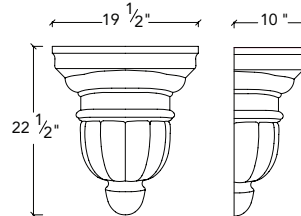
**Santa Barbara**



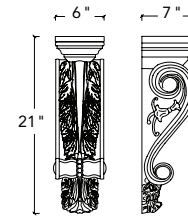
**Bellagio**



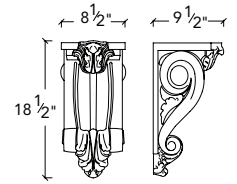
**Winston**



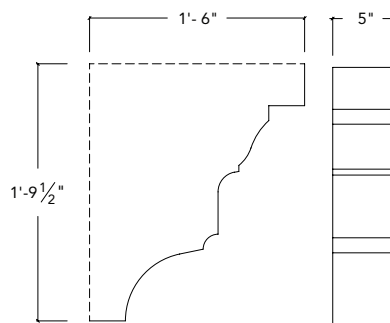
**Jefferson**



**Messalina**



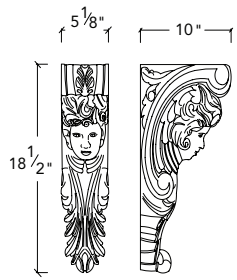
**Crescenza**



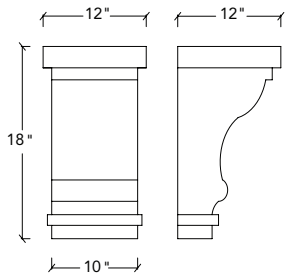
**Anelo**



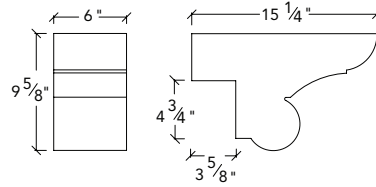




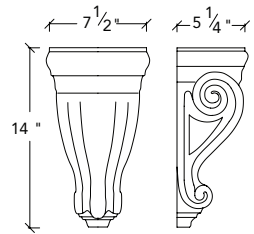
**Athena**



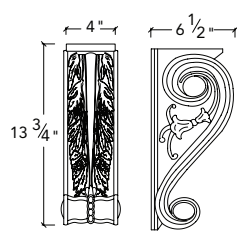
**Madison**



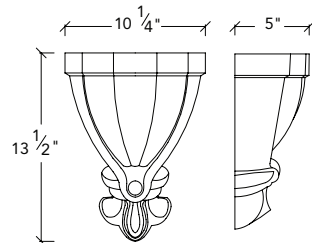
**Santa Clara  
Santa Clarita**  
4" wide



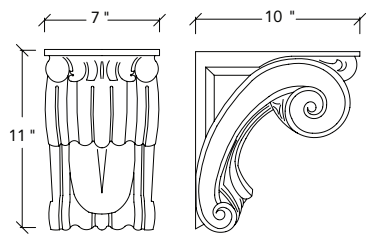
**Carmel**



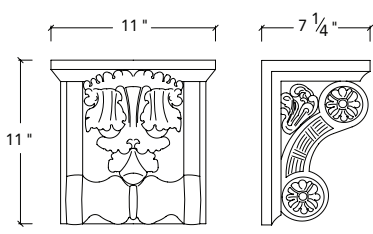
**Feliciano  
Drapery Corbel**



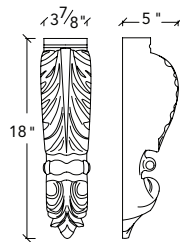
**Marsailles**



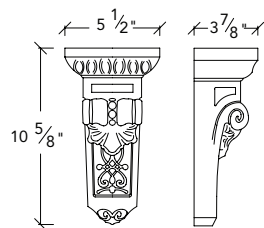
**Namazio**



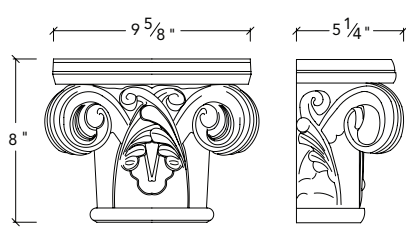
**Artesia**



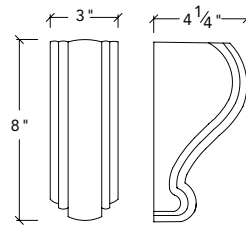
**Orazio**



**Damascus**



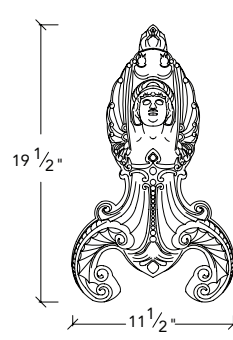
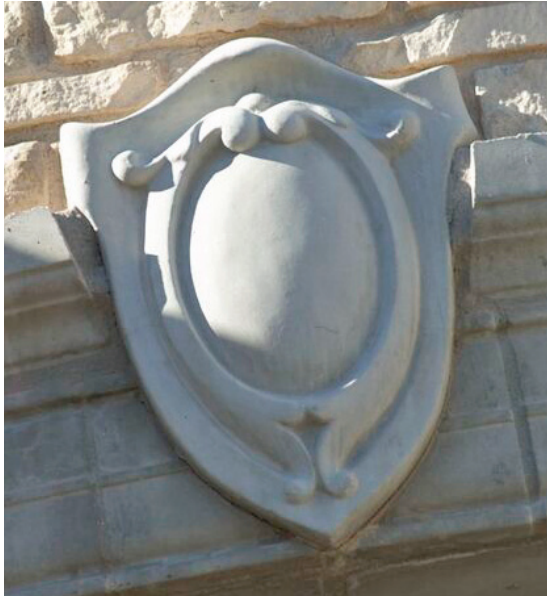
**Pylos  
C-C-P**



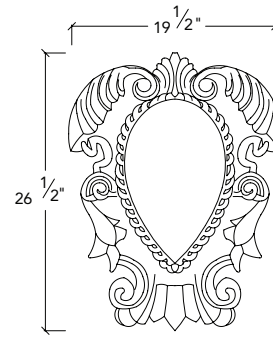
**Milan**



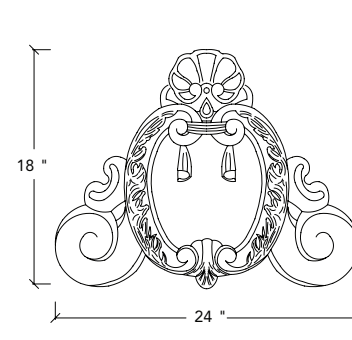
**O**rnamental Elements are individual pieces of stone that are generally used to accentuate a wall, a stairwell, or area above an entrance way. Often the decorative strength of these pieces is sufficient without the use of other elements. These products are best made of either GFRC or GFRG for ease of application.



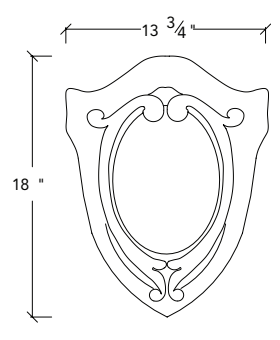
**Angel**  
Depth 2 3/4"



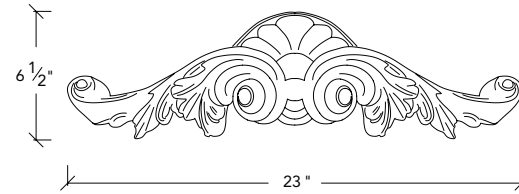
**DP-1**  
Depth 4"



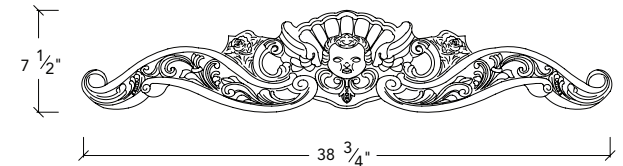
**DP-2**  
Depth 3 1/2"



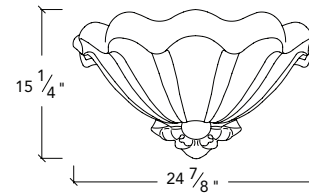
**Shield**  
Depth 2 1/2"



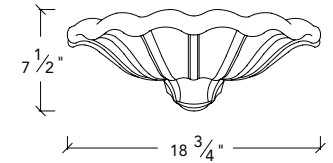
**Cartouche-1**  
Depth 3"



**Cartouche-2**  
Depth 1 3/4"

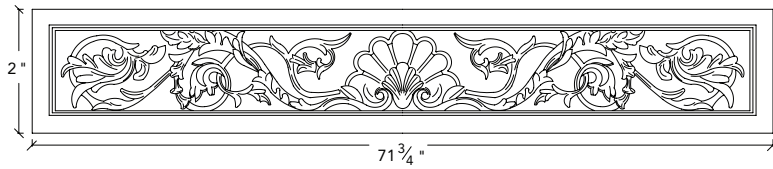


**Conch Shell-2**  
Depth 16"

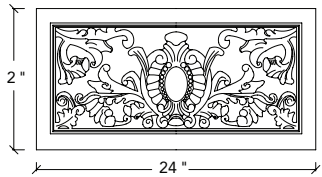


**Conch Shell-1**  
Depth 10 1/2"

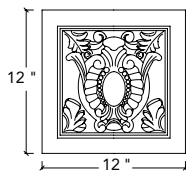




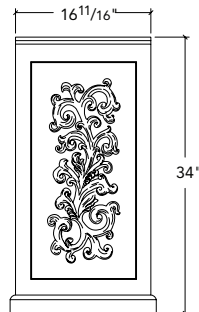
**Panel-Oleander**  
Depth 2 1/2 "



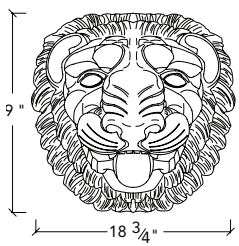
**Panel-Morgan24**  
Depth 1 7/8 "



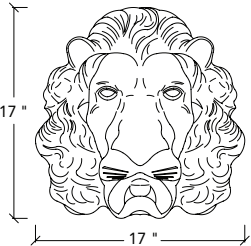
**Panel-Morgan12**  
Depth 1 7/8 "



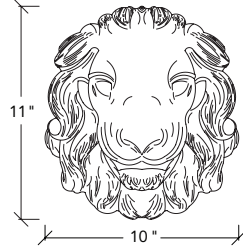
**Panel-Deco Vine**  
Depth 1 1/2 "



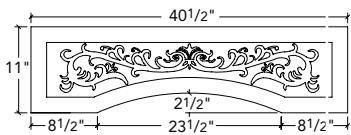
**Lion Head-1**  
Depth 11 "



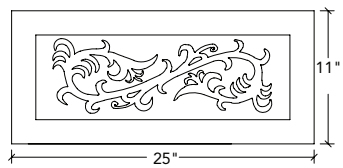
**Lion Head-2**  
Depth 8 "



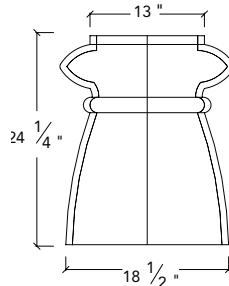
**Lion Head-3**  
Depth 5 1/2 "



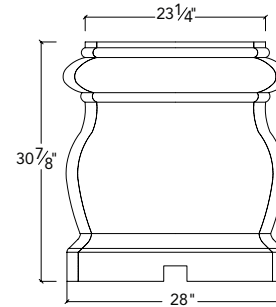
**DECORATIVE PANEL 1**



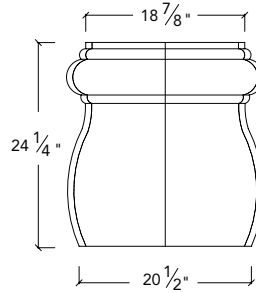
**DECORATIVE PANEL 2**



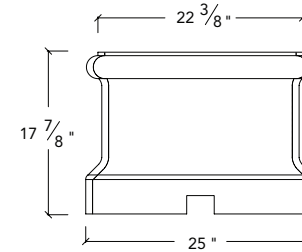
**CH-P-1**



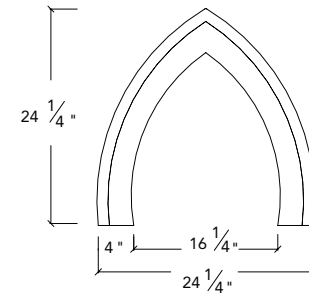
**CH-P-2**



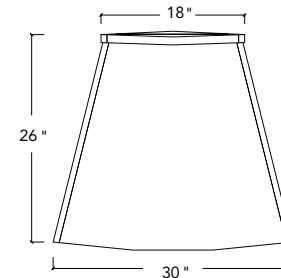
**CH-P-4**



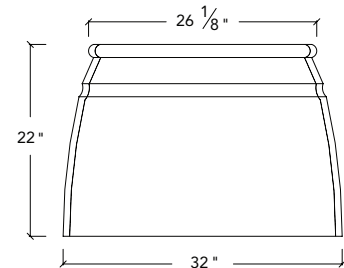
**CH-P-3\***



**CH-P-5\***  
Depth 24 "



**CH-P-7\***



**CH-P-6\***

**CHIMNEY POTS**

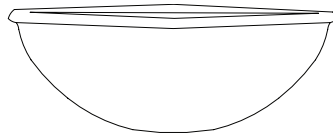
Chimney Pots are highly decorative caps for the exterior flue of a chimney to protect it from rain and freeze/thaw damage. The Mesa chimney designs have been developed over many years and are usually produced in earth-tone colors.

**NOTE:** All Chimney Pots manufactured in GFRC only.

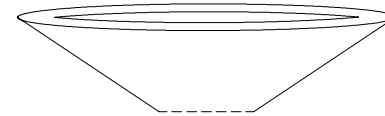
*\*Available in one piece only.*



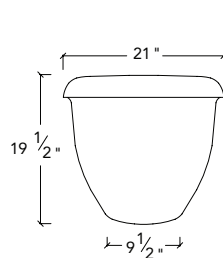
**H**ardscape elements are containers and other items that enhance terraces, porches and walkways around a home. Many of the containers come in several sizes. These landscape elements often look good when different sizes of containers are grouped together. Corbels, ornamental elements, and decorative moldings are all items that should be considered when creating an outdoor living space.



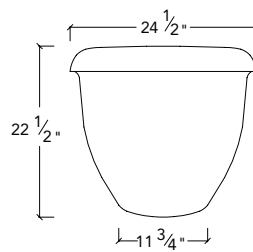
Model No.	Height	Width
P-WOK1 – Mini Wok	7 ¾"	21"
P-WOK2 – Small Wok	10 ¾"	21"
P-WOK3 – Medium Wok	11 ½"	33"
P-WOK4 – Large Wok	14 ½"	18 ½"
P-WOK5 – Extra Large Wok	19"	60"



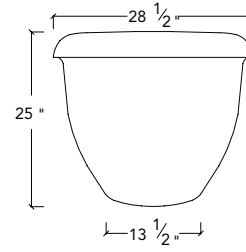
Model No.	Height	Width
P-WOK21-LP	5"	21"
P-WOK28-LP	6"	28"
P-WOK33-LP	7"	33"
P-WOK48-LP	12"	48"



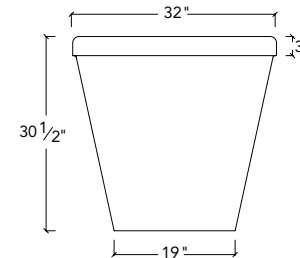
**P-SJ**  
Small Planter



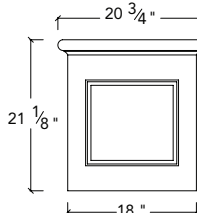
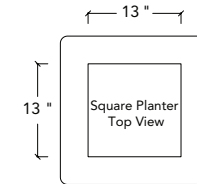
**P-MJ**  
Medium Planter



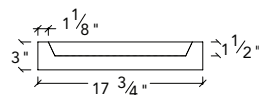
**P-LJ**  
Large Planter



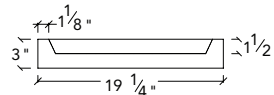
**P-GT**  
Giant Planter



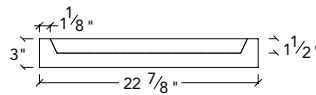
**P-SQ**  
Square Planter



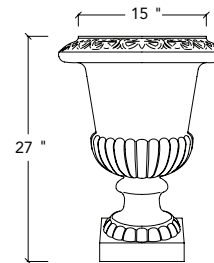
**P-SSJ**  
Small Saucer



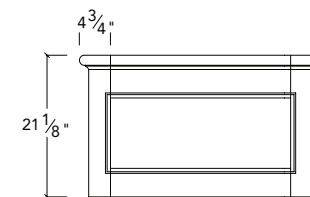
**P-SMJ**  
Medium Saucer



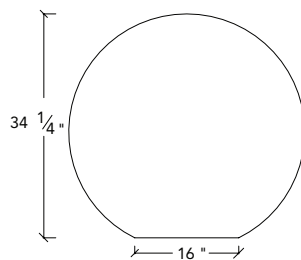
**P-SLJ**  
Large Saucer



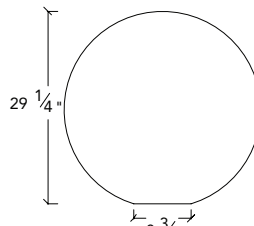
**P-DC**  
Decorative Planter



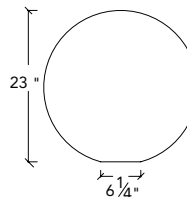
**P-RC**  
Rectangle Planter  
Available in various lengths



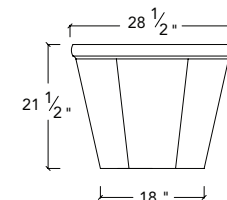
**S-36**  
Large Sphere



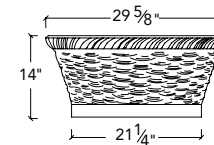
**S-30**  
Medium Sphere



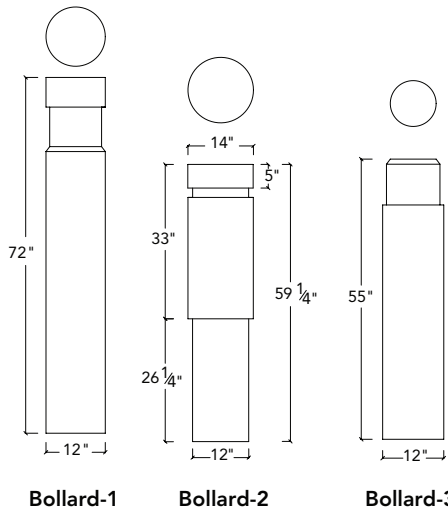
**S-24**  
Small Sphere



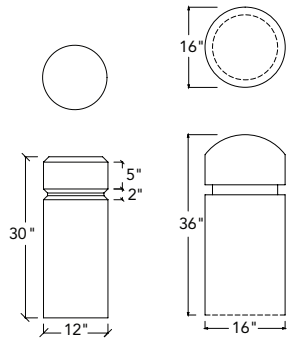
**P-HX**  
Hexagon Planter



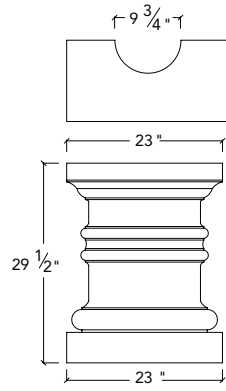
**P-BW**  
Basket Weave



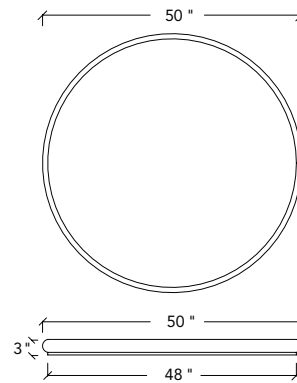
**Bollard-1** **Bollard-2** **Bollard-3**



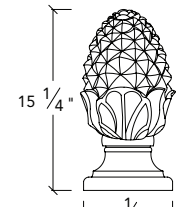
**Bollard-4** **Bollard-5**



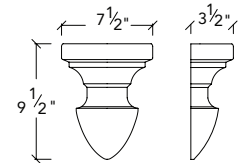
**RC-10-24**  
**Table Bottom**



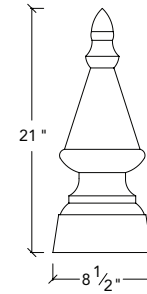
**RD-T**  
**Table Top**



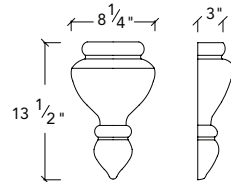
**Acorn Finial**



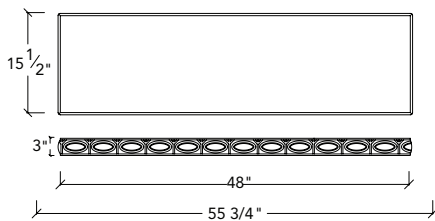
**F-1**  
**Finial**



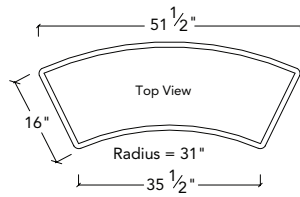
**Spear Finial**



**F-2**  
**Finial**

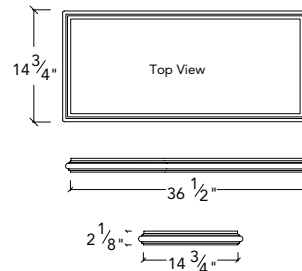


**B-S-48\***  
**B-S-55\***  
**Bench Seat**

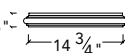


**B-C-50\***  
**Bench Seat**

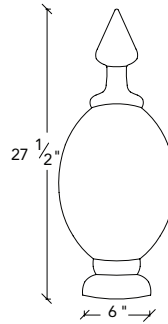
\*Detail wraps edge



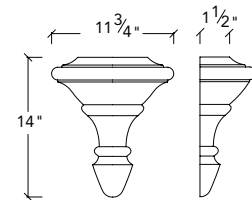
**B-S-35**  
**Bench Seat**



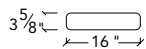
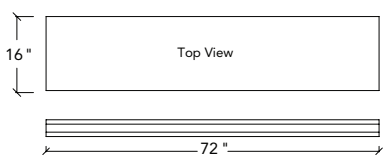
**WS-1**  
**Bumper Curb**  
Anchor holes located @ 4"  
from both ends



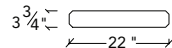
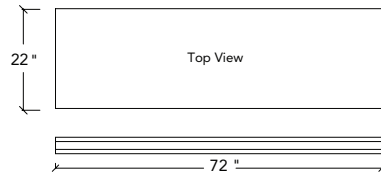
**Freemont Finial**



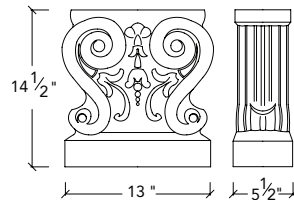
**F-3**  
**Finial**



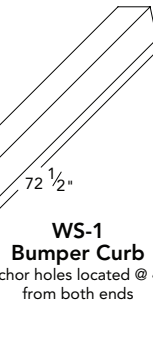
**M-16-6**  
**Bench Seat**



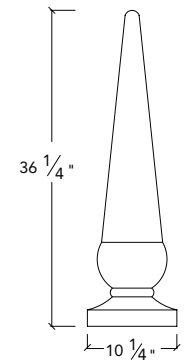
**M-20-6**  
**Bench Seat**



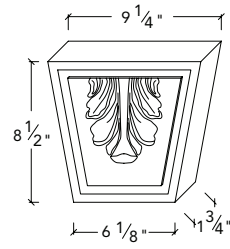
**L-12**  
**Bench Leg**



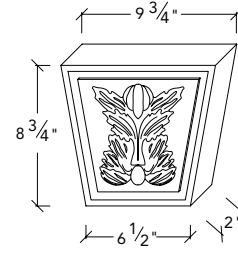
**WS-2**  
**Small Bumper Curb**  
Anchor holes located @ 9 1/2"  
from both ends



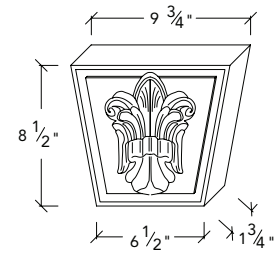
**Ashton Finial**



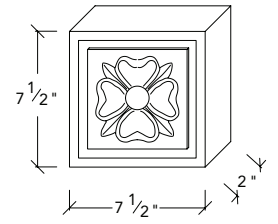
KS-L



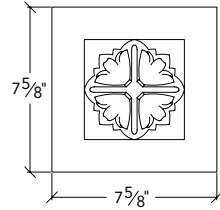
KS-A



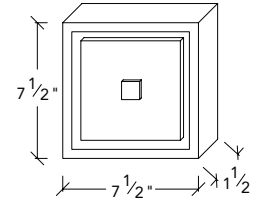
KS-F



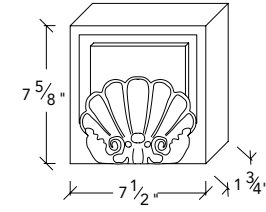
RS-F



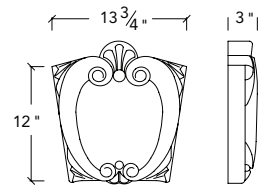
ROSETTE



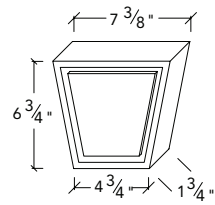
RS-P  
RS-P (DEEP)



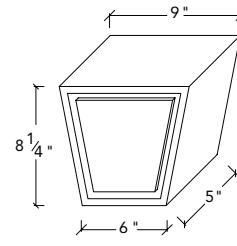
RS-S



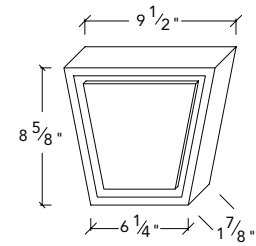
KS-P12-DECO



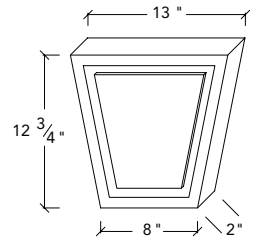
KS-P7



KS-P8-5



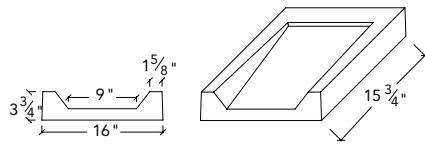
KS-P8



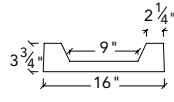
KS-P12



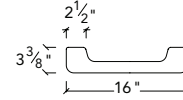
Scuppers and splash blocks are functional and decorative items used to carry water away from a structure preventing water staining and damage to any exterior wall. Scuppers can be designed to incorporate the design of a building or left unadorned. Since they are usually placed at the top of a wall, a unique design can be the focal point of an otherwise plain building facade. The finials found on page 29 can be added underneath the scupper to add interest. A splash block protects the ground beneath a scupper.



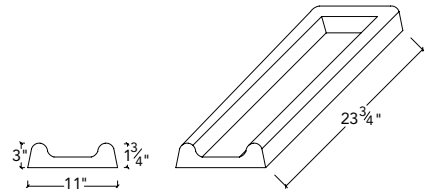
SB-A Splash Block



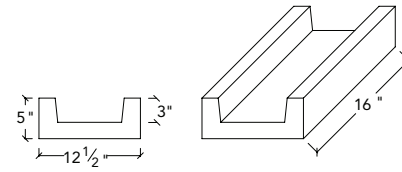
SB-B Splash Block



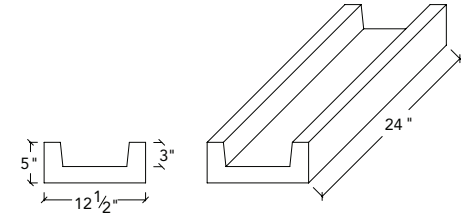
SB-C Splash Block



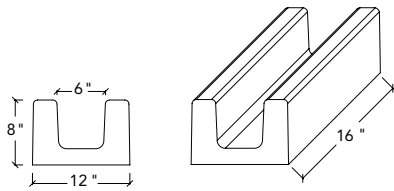
SB-D Splash Block



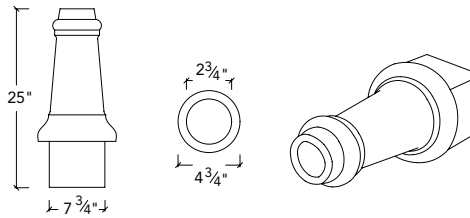
SC-1 Scupper



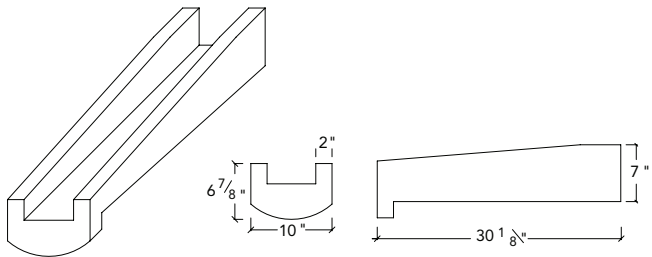
SC-2 Scupper



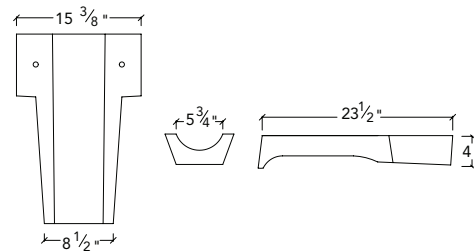
SC-3 Scupper



SC - 4 Cannon Scupper



SC-5 Scupper

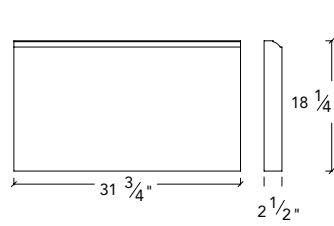


SC-6 Scupper

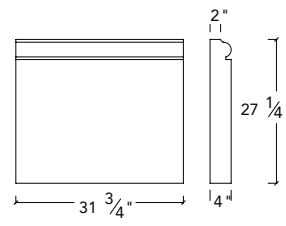


**W**ainscot is a decorative form of base material used at the bottom of a wall. These pieces can and should be used both inside and outside of a house or other structure. Precast wainscot is unusual since the base pieces are fairly large in scale with a distinct design. The other advantage is they do not need to be painted – a maintenance free product. Wainscot is often used with plinth blocks at door and window openings to add even more interest. These items are always found in custom home design and can easily upscale any property.

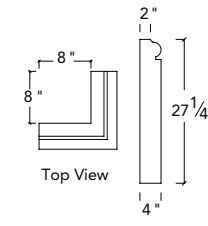
Plinths are a specialty base piece often used with wainscot. Our plinths are designed to go at the bottom of a framed opening such as a door or entry way to provide special interest.



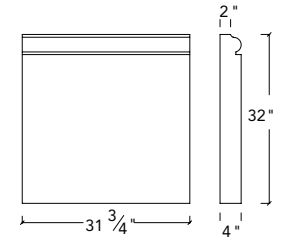
W-18-32 Wainscot



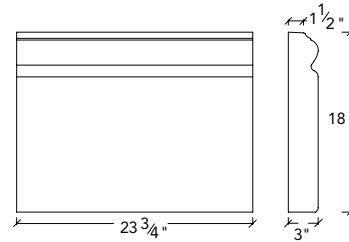
W-27-32 Wainscot



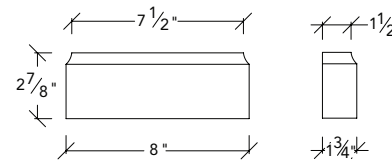
W-27-32C Wainscot



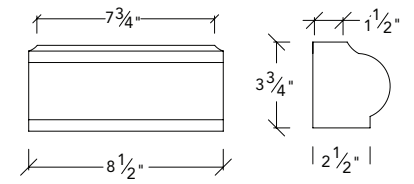
W-32-32 Wainscot



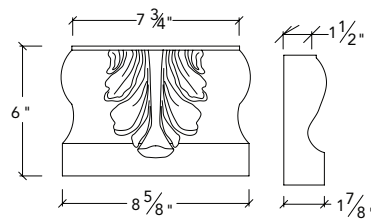
W-18-24 Wainscot



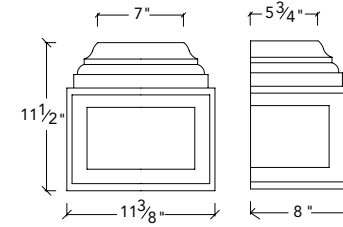
P-8 Plinth



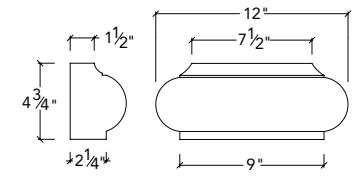
P-8B Plinth



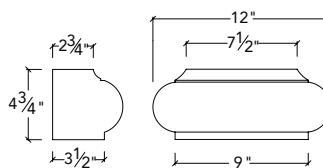
Leaf Plinth



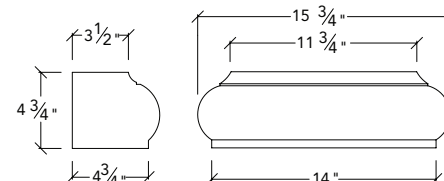
Corbel Plinth



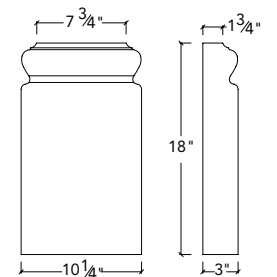
P-12 Plinth



P-12B Plinth



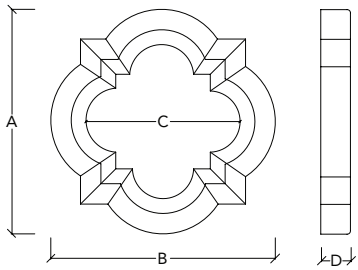
P-16 Plinth



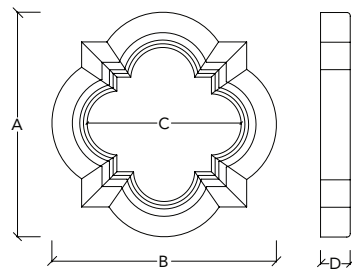
P-10 Plinth



## ARABESQUE WINDOWS



Window "A"

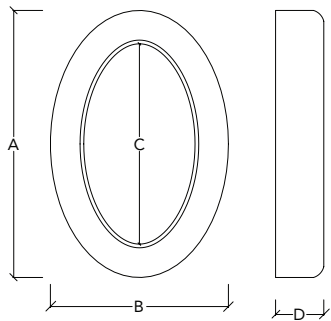


Window "AP"

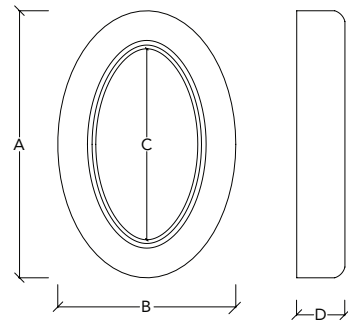
Model No.	A	B	C	D
A-4-32	30 1/4"	30 1/4"	21 1/2"	4"
A-6-32	30 1/4"	30 1/4"	21 1/2"	6"
A-6-36	36"	36"	24 3/4"	6"
A-8-40	39 3/4"	39 3/4"	28 1/2"	8"

Model No.	A	B	C	D
AP-4-32	30 1/4"	30 1/4"	20 1/2"	4"
AP-6-32	30 1/4"	30 1/4"	20 1/2"	6"
AP-6-36	36"	36"	23 3/4"	6"
AP-8-40	39 3/4"	39 3/4"	27 1/2"	8"

## ○VAL WINDOWS



Window "O"



Window "OL"

Model No.	A	B	C	D
O-2-3	36"	24"	27"	6 1/2"
O-3-4	48"	36"	36"	6 1/2"

Model No.	A	B	C	D
OL-2-3	36"	24"	25 3/4"	6 1/2"
OL-3-4	48"	36"	35 1/8"	6 1/2"

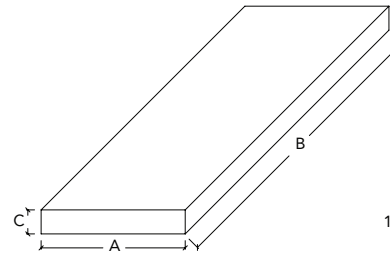
Arabesque and Oval Window Surrounds are used for accent windows. Mesa has a good selection of sizes to fit most specialty windows.



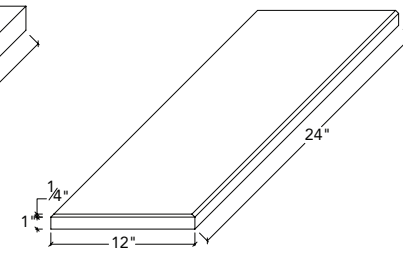
**P**avers are precast flooring material that can be manufactured to any size or shape. We produce 2 styles or looks in pavers.

Our traditional paver is a smooth architectural precast. This product comes in an almost infinite range of colors with earth-tone browns and tans being the most popular. The most used patterns are square, up to 36" x 36". Custom-designed geometric patterns provide an economical way to personalize an outdoor area.

Our Southwestern Limestone paver is a precast product that is craftsman made with a look of natural stone. The advantages of Southwestern Limestone is a wide color pallet, a cost that is less than natural material, and subtle color and texture variation. These pavers are used throughout the best of homes and commercial buildings and in all exterior applications imaginable.

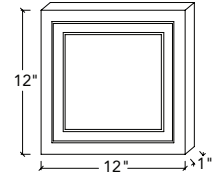


**Pavers**



**PV-12-24-CHAMF**

Chamfered Paver  
12" x 24" x 1 1/4"



**PV-12-12-DECO**

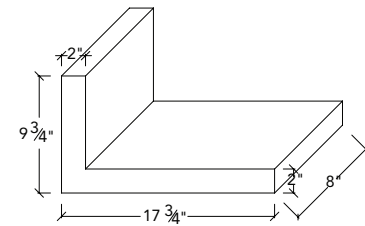
Deco Paver  
12" x 12" x 1"

A	B	C
2"	24"	2"
4"	20"	1"
8"	20"	1"
9"	24"	1"
10"	24"	1"
12"	12"	1"
12"	24"	1"
16"	16"	2"
16"	16"	2 1/2"
16"	24"	1"
16"	24"	2"
16"	24"	2 1/2"
16"	32"	2"
18"	20"	1"
18"	32"	1"
20"	20"	4"
24"	24"	2 3/8"
24"	24"	4"
28"	28"	4"
32"	32"	4"
36"	36"	4"
39"	48"	2"
44"	44"	4"
47"	48"	2"

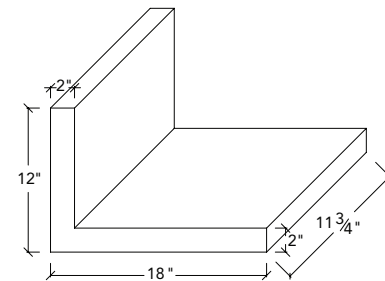




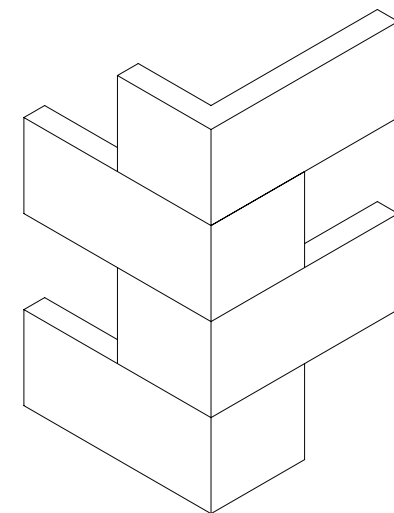
**Q**uoins are masonry pieces used at corners of exterior walls. These pieces are often called cornerstones and are used for creating visual interest and a crisp corner. Quoins are often used to accent building sections or separate and define one house from another house in a community of homes.



**QC17-9**  
Quoin Corner  
17 3/4" x 9 3/4" x 2"



**QC18-12**  
Quoin Corner  
12" x 18" x 2"



Quoin Corner Example

Mesa Precast supplies architectural precast, GFRC and GFRG to commercial projects throughout the United States. The company has the ability to price projects using its extensive line of stock products or provide custom design. We provide full CAD shop drawings and architectural consultation, mold design and production. Designers of larger projects use Mesa for projects that have both architectural precast and GFRC elements. Since Mesa produces both products, from a visual perspective they look the same. This provides visual harmony for complex designs. We have the ability to bid projects electronically saving time.





**A** monument sign made from architectural precast stone can be formed into any shape the customer requests to present a unique, interesting and informative statement. Unlike other signs made from metal, aluminum, polystyrene and plastics, architectural precast stone is a permanent material. Architectural precast stone signage is considered the premiere product for upscale buildings, developments, schools and other institutions.

Architectural precast stone signs are the perfect product when:

- Permanence is required.
- Monument style is specified.
- When the project is upscale.
- Unique size or shape is requested.
- Flexibility in lettering is needed – cast lettering, etched or sandblasted lettering, channel letters in metal or other material.
- No maintenance is desired.



#1



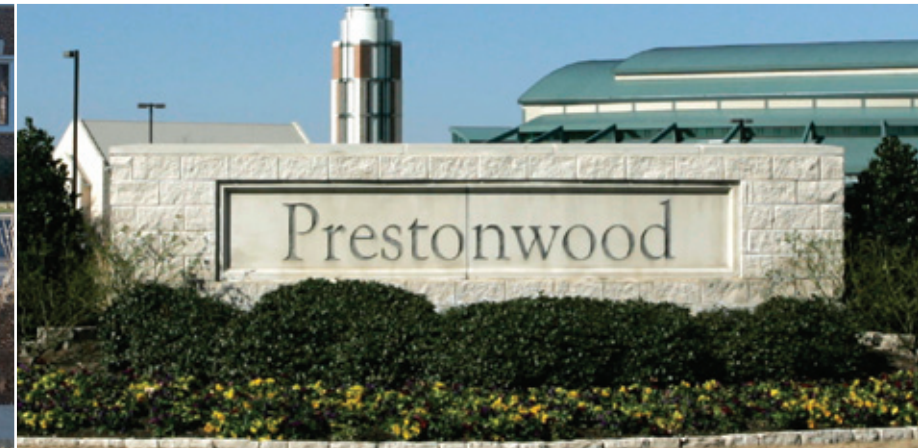
#2



#3



#4





## MESA PRECAST & SUPPLY, LLC.

### TERMS AND CONDITIONS OF SALES

**Warranty:** Mesa Precast provides a limited warranty on all products it sells. The warranty provides the product will be within industry standards of appearance and free from defects in material, for a period of one year from the date the product is shipped to the customer. Defective products will be either repaired or replaced at Mesa Precast's option. Products damaged during installation are not covered by this warranty. Likewise, products that have visible defects or damage upon arrival at the job site must be reported to Mesa Precast under this warranty before installation. Installed products are considered accepted and are beyond this warranty.

Hairline cracks and crazing on the surface of precast products are common, since precast is a masonry product. Such conditions are not a warranty issue, and do not effect the integrity of the precast.

**Color/Texture:** The color of precast material has the potential to vary from piece to piece since the product is made primarily from materials occurring in nature. If a custom color is desired, a control piece of the stone should be requested and approved, prior to production. Weather conditions, sand sources, and cement formulations can all have an effect on color. Color variation gives the product a natural look, much like quarried stone.

The finish of precast is either smooth or textured. Smooth precast has a surface similar to concrete. The Mesa Precast textured finish provides a random and irregular pattern of indentions, giving the effect of a beautifully worn finish. Both smooth and textured finishes may be, but need not be, painted or faux-finished.

**Installation:** Mesa Precast is a manufacturing company and does not install precast. Persons and firms that are familiar with the proper installation of precast products include masons, general contractors, remodelers and persons who specialize in precast who are sometimes called installers. Customers should deal with installers that are experienced in precast installation and have knowledge of these products,

and those firms that have a well regarded reputation. Mesa Precast does not warrant the work of any installer.

Make sure a discussion is held with the installer describing the precast item desired to be installed, and the conditions that are present. Certain products require more skill than other products to install. For example, mantels and surrounds are not hard to install, but need to fit precisely in order for the material to look its best. Larger pieces of precast may require additional attachments. Also, many times precast will need to be field cut, since the product is manufactured in fixed lengths.

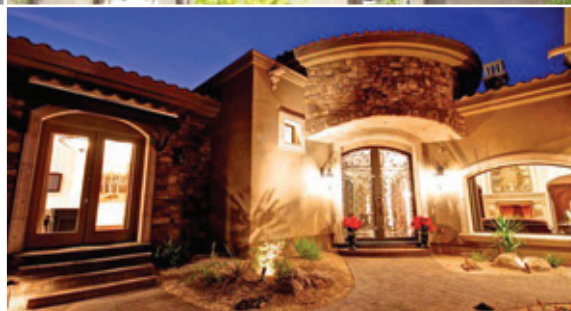
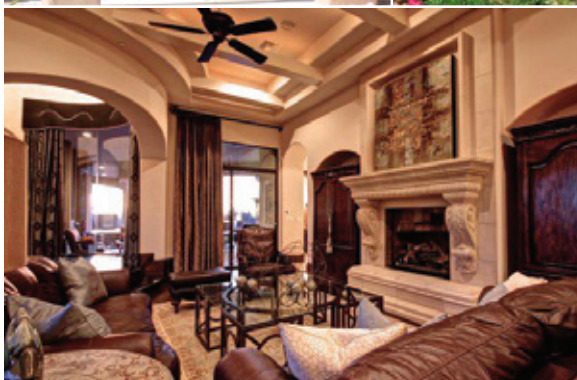
**Dimensional Tolerance:** Typical dimensional tolerance for precast material is plus or minus 1/8". This applies to all sectional dimensions, as well as widths and thickness. Precast is usually hand-cast; this process requires a "draft", or a taper (slant) on the mold for a proper release.

**Lead Time:** Mesa Precast's normal lead time is two to four weeks. However, based on production work load and special mold requirements, lead time may increase. Discussions with one of Mesa Precast's customer service representatives are encouraged at the time an order is placed.

**Delivery:** Mesa Precast and Supply offers delivery of most products for an additional charge. The customer also has the option of picking up product.

**Returns:** In most cases, returns are not allowed due to the custom nature of the product and order. However, if a return is authorized, it is subject to a 25% restocking fee. Returns are allowed at the sole discretion of Mesa Precast and Supply.

**Cut-Sheets:** Cut-sheets available upon request.



 **MESA PRECAST**  
ARCHITECTURAL CONCRETE ELEMENTS

Showroom: 415 South Price Road, Tempe, Arizona 85281  
480.968.5400 | Fax 480.894.0375  
[www.MesaPrecast.com](http://www.MesaPrecast.com) | [Sales@MesaPrecast.com](mailto:Sales@MesaPrecast.com)